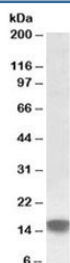


SRXN1 Antibody (R34686)

Catalog No.	Formulation	Size
R34686-100UG	0.5 mg/ml in 1X TBS, pH7.3, with 0.5% BSA (US sourced) and 0.02% sodium azide	100 ug

[Bulk quote request](#)

Availability	1-3 business days
Species Reactivity	Human
Predicted Reactivity	Cow, Mouse, Pig, Rat
Format	Antigen affinity purified
Host	Goat
Clonality	Polyclonal (goat origin)
Isotype	Goat Ig
Purity	Antigen affinity
Gene ID	140809
Applications	Western Blot : 0.5-1.5ug/ml ELISA (peptide) LOD : 1:32000
Limitations	This SRXN1 antibody is available for research use only.



Western blot testing of human kidney lysate with SRXN1 antibody at 0.5ug/ml. Predicted molecular weight: ~14kDa.

Description

Additional name(s) for this target protein: Sulfiredoxin 1, SRX1

Application Notes

Optimal dilution of the SRXN1 antibody should be determined by the researcher.

Immunogen

Amino acids KVQSLVDTIREDPD were used as the immunogen for this SRXN1 antibody.

Storage

Aliquot and store the SRXN1 antibody at -20oC.