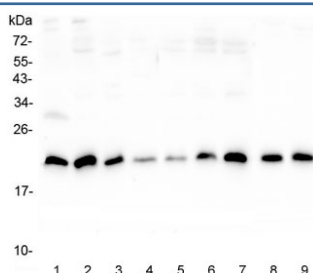


## SRI Antibody / Sorcin (RQ4661)

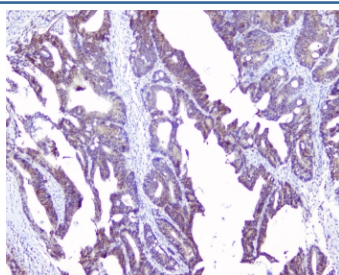
Catalog No.	Formulation	Size
RQ4661	0.5mg/ml if reconstituted with 0.2ml sterile DI water	100 ug

**Bulk quote request**

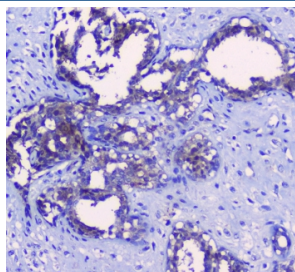
<b>Availability</b>	1-3 business days
<b>Species Reactivity</b>	Human, Mouse, Rat
<b>Format</b>	Antigen affinity purified
<b>Clonality</b>	Polyclonal (rabbit origin)
<b>Isotype</b>	Rabbit IgG
<b>Purity</b>	Antigen affinity purified
<b>Buffer</b>	Lyophilized from 1X PBS with 2% Trehalose and 0.025% sodium azide
<b>UniProt</b>	P30626
<b>Localization</b>	Cytoplasmic, nuclear
<b>Applications</b>	Western Blot : 0.5-1ug/ml IHC (FFPE) : 1-2ug/ml
<b>Limitations</b>	This SRI antibody is available for research use only.



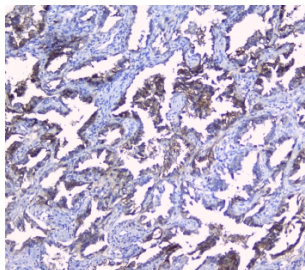
Western blot testing of human 1) placenta, 2) U-2 OS, 3) A431, 4) PC-3, 5) HL-60, 6) K562, 7) Caco-2, 8) rat lung and 9) mouse lung lysate with SRI antibody at 0.5ug/ml. Predicted molecular weight ~22 kDa, routinely observed at 22-29 kDa.



IHC staining of FFPE human intestinal cancer with SRI antibody at 1ug/ml. HIER: boil tissue sections in pH6, 10mM citrate buffer, for 10-20 min followed by cooling at RT for 20 min.



IHC staining of FFPE human breast cancer with SRI antibody at 1ug/ml. HIER: boil tissue sections in pH6, 10mM citrate buffer, for 10-20 min followed by cooling at RT for 20 min.



IHC staining of FFPE human lung cancer with SRI antibody at 1ug/ml. HIER: boil tissue sections in pH6, 10mM citrate buffer, for 10-20 min followed by cooling at RT for 20 min.

## Description

Sorcin is a protein that in humans is encoded by the SRI gene. It is mapped to 7q21.1. This gene encodes a calcium-binding protein with multiple E-F hand domains that relocates from the cytoplasm to the sarcoplasmic reticulum in response to elevated calcium levels. In addition to regulating intracellular calcium homeostasis it also modulates excitation-contraction coupling in the heart. Alternative splicing results in multiple transcript variants encoding distinct proteins. Multiple pseudogenes exist for this gene.

## Application Notes

Optimal dilution of the SRI antibody should be determined by the researcher.

## Immunogen

Amino acids TVDPQELQKALTTMGFRLSPQAVNSIAKRY were used as the immunogen for the SRI antibody.

## Storage

After reconstitution, the SRI antibody can be stored for up to one month at 4oC. For long-term, aliquot and store at -20oC. Avoid repeated freezing and thawing.