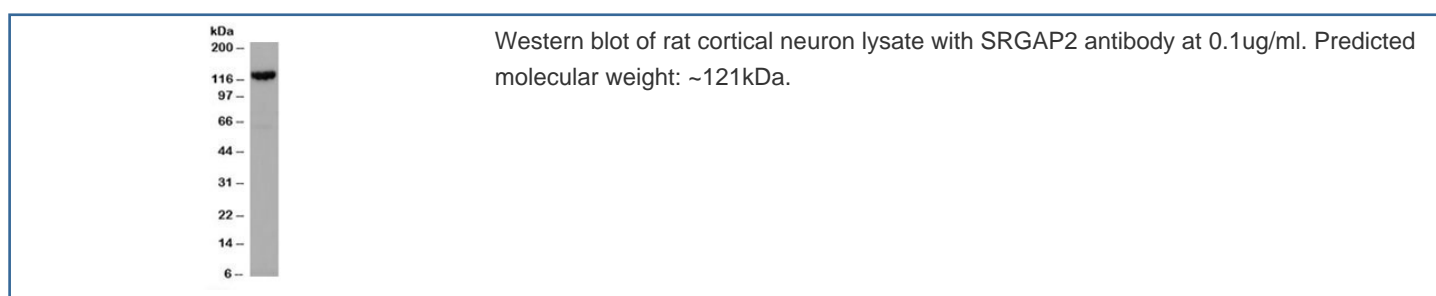
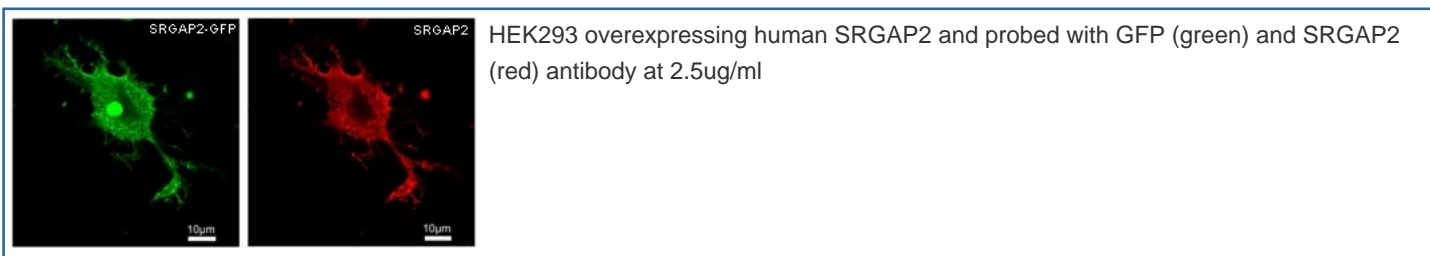


## SRGAP2 Antibody (R34588)

Catalog No.	Formulation	Size
R34588-100UG	0.5 mg/ml in 1X TBS, pH7.3, with 0.5% BSA (US sourced) and 0.02% sodium azide	100 ug

[Bulk quote request](#)

Availability	1-3 business days
Species Reactivity	Human, Rat
Predicted Reactivity	Cow, Dog, Mouse
Format	Antigen affinity purified
Host	Goat
Clonality	Polyclonal (goat origin)
Isotype	Goat Ig
Purity	Antigen affinity
Gene ID	23380
Applications	Western Blot : 0.1-0.3ug/ml Immunofluorescence : 2-4ug/ml ELISA (peptide) LOD : 1:8000
Limitations	This SRGAP2 antibody is available for research use only.



## Description

Additional name(s) for this target protein: SLIT-ROBO Rho GTPase activating protein 2

## Application Notes

Optimal dilution of the SRGAP2 antibody should be determined by the researcher.

1. This SRGAP2 antibody is specific for isoform a.

## Immunogen

Amino acids KQEDRQTPRSPDST were used as the immunogen for this SRGAP2 antibody.

## Storage

Aliquot and store the SRGAP2 antibody at -20oC.