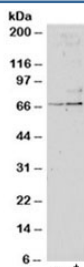


SRF Antibody (R35203)

Catalog No.	Formulation	Size
R35203-100UG	0.5 mg/ml in 1X TBS, pH7.3, with 0.5% BSA (US sourced) and 0.02% sodium azide	100 ug

Bulk quote request

Availability	1-3 business days
Species Reactivity	Human
Predicted Reactivity	Cow, Dog, Mouse
Format	Antigen affinity purified
Host	Goat
Clonality	Polyclonal (goat origin)
Isotype	Goat Ig
Purity	Antigen affinity
Gene ID	6722
Applications	Western Blot : 1-3ug/ml ELISA (peptide) LOD : 1:32000
Limitations	This SRF antibody is available for research use only.



Western blot testing of untreated (left) and TGFBI-treated (right, 1ng/ml, 24hr) primary cultured human lung fibroblasts with SRF antibody at 1ug/ml. Predicted molecular weight: ~52/60-70kDa (unmodified/phosphorylated).

Description

Additional name(s) for this target protein: Serum response factor

Application Notes

Optimal dilution of the SRF antibody should be determined by the researcher.

Immunogen

Amino acids QASPSRDSSTDLTQ were used as the immunogen for this SRF antibody.

Storage

Aliquot and store the SRF antibody at -20oC.