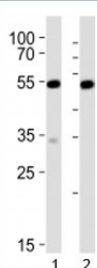


## Srf Antibody (F52804)

Catalog No.	Formulation	Size
F52804-0.4ML	In 1X PBS, pH 7.4, with 0.09% sodium azide	0.4 ml
F52804-0.08ML	In 1X PBS, pH 7.4, with 0.09% sodium azide	0.08 ml

[Bulk quote request](#)

<b>Availability</b>	1-3 business days
<b>Species Reactivity</b>	Mouse, Rat
<b>Format</b>	Antigen affinity purified
<b>Host</b>	Rabbit
<b>Clonality</b>	Polyclonal (rabbit origin)
<b>Isotype</b>	Rabbit Ig
<b>Purity</b>	Antigen affinity
<b>UniProt</b>	Q9JM73
<b>Applications</b>	Western Blot : 1:1000
<b>Limitations</b>	This Srf antibody is available for research use only.



Western blot analysis of lysate from 1) mouse NIH3T3 and 2) rat C6 cell line using Srf antibody at 1:1000. Predicted molecular weight: ~52/60-70kDa (unmodified/phosphorylated).

## Description

SRF is a transcription factor that binds to the serum response element (SRE), a short sequence of dyad symmetry located 300 bp to the 5' of the site of transcription initiation of some genes (such as FOS) (By similarity). Required for cardiac differentiation and maturation.

## Application Notes

Titration of the Srf antibody may be required due to differences in protocols and secondary/substrate sensitivity.

## Immunogen

This Srf antibody was produced from a rabbit immunized with a KLH conjugated synthetic peptide between 489-524 amino acids from the C-terminal region of mouse Srf.

## Storage

Aliquot the Srf antibody and store frozen at -20oC or colder. Avoid repeated freeze-thaw cycles.