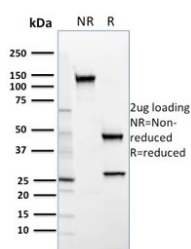


SREBP2 Antibody / SREBF2 [clone SREBP2/1579] (V8100)

Catalog No.	Formulation	Size
V8100-100UG	0.2 mg/ml in 1X PBS with 0.1 mg/ml BSA (US sourced) and 0.05% sodium azide	100 ug
V8100-20UG	0.2 mg/ml in 1X PBS with 0.1 mg/ml BSA (US sourced) and 0.05% sodium azide	20 ug
V8100SAF-100UG	1 mg/ml in 1X PBS; BSA free, sodium azide free	100 ug

[Bulk quote request](#)

Availability	1-3 business days
Species Reactivity	Human
Format	Purified
Host	Mouse
Clonality	Monoclonal (mouse origin)
Isotype	Mouse IgG1, kappa
Clone Name	SREBP2/1579
Purity	Protein G affinity chromatography
UniProt	Q12772
Applications	ELISA (order BSA-free Format For Coating) :
Limitations	This SREBP2 antibody is available for research use only.



SDS-PAGE analysis of purified, BSA-free SREBP2 antibody (clone SREBP2/1579) as confirmation of integrity and purity.

Description

The low density lipoprotein (LDL) receptor mediates the endocytic uptake of cholesterol-carrying lipoproteins, thereby controlling cholesterol levels in cells and plasma. Transcription of the LDL receptor gene is controlled by a ten base pair

sequence in the 5' flanking region, designated sterol regulatory element 1 (SRE-1). When cellular sterol stores are depleted, the element is activated, the gene is transcribed and the cellular uptake of LDL increases. A set of SREbinding proteins (SREBPs) have been identified, including two basic helixloop-helix-leucine zipper (bHLH-zip) transcription factors, designated SREBP-1 and SREBP-2. SREBP-1 and SREBP-2 have been shown to have the same specificity for SRE-1 in vitro and to activate the transcription of reporter genes containing SRE-1 in the same way.

Application Notes

Optimal dilution of the SREBP2 antibody should be determined by the researcher.

Immunogen

A recombinant full-length human protein was used as the immunogen for this SREBP2 antibody.

Storage

Store the SREBP2 antibody at 2-8oC (with azide) or aliquot and store at -20oC or colder (without azide).