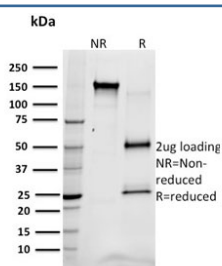


SREBP1 Antibody / Sterol regulatory element-binding protein 1 [clone SREBP1/1578] (V8099)

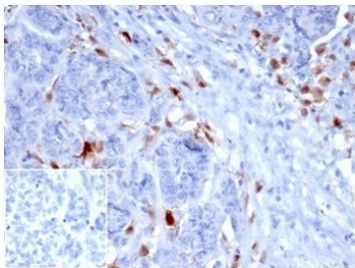
Catalog No.	Formulation	Size
V8099-100UG	0.2 mg/ml in 1X PBS with 0.1 mg/ml BSA (US sourced) and 0.05% sodium azide	100 ug
V8099-20UG	0.2 mg/ml in 1X PBS with 0.1 mg/ml BSA (US sourced) and 0.05% sodium azide	20 ug
V8099SAF-100UG	1 mg/ml in 1X PBS; BSA free, sodium azide free	100 ug

[Bulk quote request](#)

Availability	1-3 business days
Species Reactivity	Human
Format	Purified
Host	Mouse
Clonality	Monoclonal (mouse origin)
Isotype	Mouse IgG2b, kappa
Clone Name	SREBP1/1578
Purity	Protein G affinity chromatography
UniProt	P36956
Applications	Immunohistochemistry (FFPE) : 1-2ug/ml
Limitations	This SREBP1 antibody is available for research use only.



SDS-PAGE analysis of purified, BSA-free SREBP1 antibody (clone SREBP1/1578) as confirmation of integrity and purity.



IHC staining of FFPE human ovarian carcinoma with SREBP1 antibody (clone SREBP1/1578). HIER: boil tissue sections in pH 9 10mM Tris with 1mM EDTA for 20 min and allow to cool before testing. Negative control inset: PBS used instead of primary antibody to control for secondary Ab binding.

Description

The low density lipoprotein (LDL) receptor mediates the endocytic uptake of cholesterol-carrying lipoproteins, thereby controlling cholesterol levels in cells and plasma. Transcription of the LDL receptor gene is controlled by a ten base pair sequence in the 5' flanking region, designated sterol regulatory element 1 (SRE-1). When cellular sterol stores are depleted, the element is activated, the gene is transcribed and the cellular uptake of LDL increases. A set of SREbinding proteins (SREBPs) have been identified, including two basic helixloop-helix-leucine zipper (bHLH-zip) transcription factors, designated SREBP-1 and SREBP-2. SREBP-1 and SREBP-2 have been shown to have the same specificity for SRE-1 in vitro and to activate the transcription of reporter genes containing SRE-1 in the same way.

Application Notes

Optimal dilution of the SREBP1 antibody should be determined by the researcher.

Immunogen

A recombinant full-length human protein was used as the immunogen for this SREBP1 antibody.

Storage

Store the SREBP1 antibody at 2-8oC (with azide) or aliquot and store at -20oC or colder (without azide).