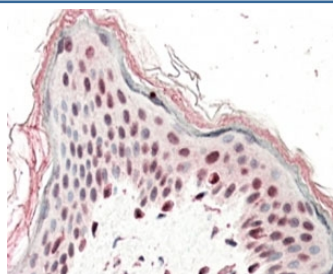


SRCAP Antibody (R35238)

Catalog No.	Formulation	Size
R35238-100UG	0.5 mg/ml in 1X TBS, pH7.3, with 0.5% BSA (US sourced) and 0.02% sodium azide	100 ug

[Bulk quote request](#)

Availability	1-3 business days
Species Reactivity	Human
Predicted Reactivity	Dog, Mouse, Pig, Rat
Format	Antigen affinity purified
Host	Goat
Clonality	Polyclonal (goat origin)
Isotype	Goat Ig
Purity	Antigen affinity
Gene ID	10847
Applications	Immunohistochemistry (FFPE) : 5-10ug/ml ELISA (peptide) LOD : 1:128000
Limitations	This SRCAP antibody is available for research use only.



IHC testing of FFPE human skin with SRCAP antibody at 5ug/ml. HIER: steamed with pH6 citrate buffer, AP-staining.

Description

Additional name(s) for this target protein: Snf2-related CREBBP activator protein

Application Notes

Optimal dilution of the SRCAP antibody should be determined by the researcher.

Immunogen

Amino acids QEGNDAEAQRREIE were used as the immunogen for this SRCAP antibody.

Storage

Aliquot and store the SRCAP antibody at -20oC.