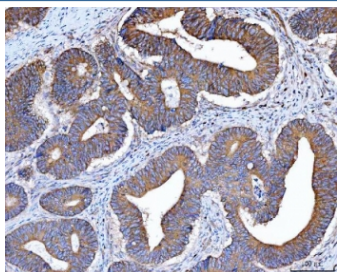


Src Antibody (R31489)

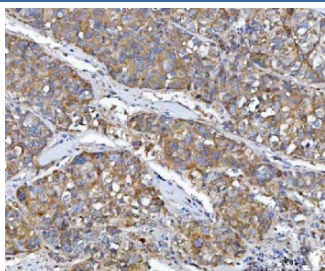
Catalog No.	Formulation	Size
R31489	0.5mg/ml if reconstituted with 0.2ml sterile DI water	100 ug

Bulk quote request

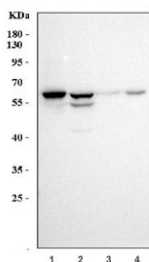
Availability	1-3 business days
Species Reactivity	Human
Format	Antigen affinity purified
Clonality	Polyclonal (rabbit origin)
Isotype	Rabbit IgG
Purity	Antigen affinity
Buffer	Lyophilized from 1X PBS with 2% Trehalose
UniProt	P12931
Localization	Cytoplasmic, nuclear, cell membrane
Applications	Western Blot : 0.5-1ug/ml Immunohistochemistry (FFPE) : 2-5ug/ml Flow Cytometry : 1-3ug/million cells
Limitations	This Src antibody is available for research use only.



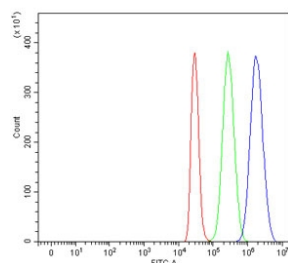
IHC staining of FFPE human rectal cancer tissue with Src antibody. HIER: boil tissue sections in pH8 EDTA for 20 min and allow to cool before testing.



IHC staining of FFPE human liver cancer tissue with Src antibody. HIER: boil tissue sections in pH8 EDTA for 20 min and allow to cool before testing.



Western blot testing of human 1) A549, 2) RT4, 3) PC-3 and 4) SH-SY5Y cell lysate with Src antibody. Predicted molecular weight: 55-60 kDa.



Flow cytometry testing of human HepG2 cells with Src antibody at 1ug/million cells (blocked with goat sera); Red=cells alone, Green=isotype control, Blue= Src antibody.

Description

Sarcoma is a proto-oncogenic tyrosine kinase originally discovered by J. Michael Bishop and Harold E. Varmus. It belongs to a family of non-receptor tyrosine kinases called Src family kinases. The human proto-oncogene was assigned to chromosome 20. Its gene is mapped to 20q12-q13. The discovery of Src family proteins has been instrumental to the modern understanding of cancer as a disease where normally healthy cellular signalling has gone awry. This proto-oncogene may play a role in the regulation of embryonic development and cell growth.

Application Notes

The stated application concentrations are suggested starting points. Titration of the Src antibody may be required due to differences in protocols and secondary/substrate sensitivity.

Immunogen

Human partial recombinant protein (AA 2-368) was used as the immunogen for this Src antibody.

Storage

After reconstitution, the Src antibody can be stored for up to one month at 4oC. For long-term, aliquot and store at -20oC. Avoid repeated freezing and thawing.