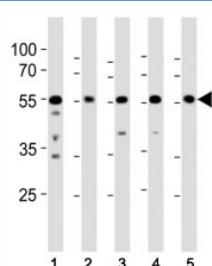


## Src Antibody (F47453)

Catalog No.	Formulation	Size
F47453-0.4ML	In 1X PBS, pH 7.4, with 0.09% sodium azide	0.4 ml
F47453-0.08ML	In 1X PBS, pH 7.4, with 0.09% sodium azide	0.08 ml

[Bulk quote request](#)

<b>Availability</b>	1-3 business days
<b>Species Reactivity</b>	Human, Mouse, Rat
<b>Format</b>	Antigen affinity purified
<b>Clonality</b>	Polyclonal (rabbit origin)
<b>Isotype</b>	Rabbit Ig
<b>Purity</b>	Antigen affinity
<b>UniProt</b>	P12931
<b>Applications</b>	Western Blot : 1:500-1:1000
<b>Limitations</b>	This Src antibody is available for research use only.



Western blot analysis of lysate from (1) A431, (2) RD, (3) mouse NIH3T3, (4) mouse C2C12, and (5) rat PC-12 cell line using Src antibody at 1:1000.

## Description

Src is a non-receptor protein tyrosine kinase which is activated following engagement of many different classes of cellular receptors including immune response receptors, integrins and other adhesion receptors, receptor protein tyrosine kinases, G protein-coupled receptors as well as cytokine receptors. Participates in signaling pathways that control a diverse spectrum of biological activities including gene transcription, immune response, cell adhesion, cell cycle progression, apoptosis, migration, and transformation. Due to functional redundancy between members of the SRC kinase family, identification of the specific role of each Src kinase is very difficult. Src appears to be one of the primary kinases activated following engagement of receptors and plays a role in the activation of other protein tyrosine kinase (PTK) families. [UniProt]

## Application Notes

Titration of the Src antibody may be required due to differences in protocols and secondary/substrate sensitivity.

## Immunogen

A portion of amino acids 24-52 from the human protein was used as the immunogen for this Src antibody.

## Storage

Aliquot the Src antibody and store frozen at -20oC or colder. Avoid repeated freeze-thaw cycles.