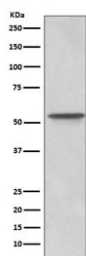


Src Antibody [clone DCI-19] (RQ5396)

Catalog No.	Formulation	Size
RQ5396	Antibody in PBS with 0.02% sodium azide, 50% glycerol and 0.4-0.5mg/ml BSA	100 ul

[Bulk quote request](#)

Availability	1-2 weeks
Species Reactivity	Human
Format	Purified
Host	Rabbit
Clonality	Rabbit Monoclonal
Isotype	Rabbit IgG
Clone Name	DCI-19
Purity	Affinity purified
UniProt	P12931
Applications	Western Blot : 1:500-1:2000
Limitations	This Src antibody is available for research use only.



Western blot testing of human U-87 MG cell lysate with Src antibody. Predicted molecular weight: 55-60 kDa.

Description

The SRC gene is highly similar to the v-src gene of Rous sarcoma virus. This proto-oncogene may play a role in the regulation of embryonic development and cell growth. The protein encoded by this gene is a tyrosine-protein kinase whose activity can be inhibited by phosphorylation by c-SRC kinase. Mutations in this gene could be involved in the malignant progression of colon cancer. Two transcript variants encoding the same protein have been found for this gene. [RefSeq]

Application Notes

Optimal dilution of the Src antibody should be determined by the researcher.

Immunogen

A synthetic peptide specific to human Src was used as the immunogen for the Src antibody.

Storage

Store the Src antibody at -20oC.