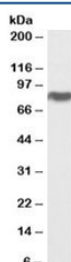


SR-BI Antibody (R36278)

| Catalog No. | Formulation | Size |
|--------------|---|--------|
| R36278-100UG | 0.5 mg/ml in 1X TBS, pH7.3, with 0.5% BSA (US sourced) and 0.02% sodium azide | 100 ug |

[Bulk quote request](#)

| | |
|--------------------|---|
| Availability | 1-3 business days |
| Species Reactivity | Human |
| Format | Antigen affinity purified |
| Host | Goat |
| Clonality | Polyclonal (goat origin) |
| Isotype | Goat Ig |
| Purity | Antigen affinity |
| Gene ID | 949 |
| Applications | Western Blot : 0.1-1ug/ml ELISA (peptide) LOD : 1:128000 |
| Limitations | This SR-BI antibody is available for research use only. |



Western blot testing of human adrenal gland lysate with SR-BI antibody at 0.01ug/ml.
Predicted molecular weight: ~57/82kDa (unmodified/glycosylated).

Description

Additional name(s) for this target protein: Scavenger receptor class B, member 1 (SCARB1); scavenger receptor B1

Application Notes

Optimal dilution of the SR-BI antibody should be determined by the researcher.

1. This SR-BI antibody is specific for isoform 1.

Immunogen

Amino acids TSAPKGSVLQEAK were used as the immunogen for this SR-BI antibody.

Storage

Aliquot and store the SR-BI antibody at -20oC.

References (1)