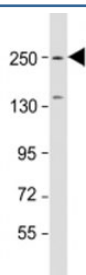


SPTBN1 Antibody / Spectrin beta (F53912)

Catalog No.	Formulation	Size
F53912-0.05ML	In 1X PBS, pH 7.4, with 0.09% sodium azide	0.05 ml

[Bulk quote request](#)

Availability	1-3 business days
Species Reactivity	Mouse
Predicted Reactivity	Human
Format	Antigen affinity purified
Host	Rabbit
Clonality	Polyclonal (rabbit origin)
Isotype	Rabbit Ig
Purity	Antigen affinity
UniProt	Q01082
Applications	Western Blot : 1:500-1000
Limitations	This SPTBN1 antibody is available for research use only.



Western blot testing of mouse brain lysate with SPTBN1 antibody at 1:1000. Predicted molecular weight: 275 kDa.

Description

SPTBN1, which seems to be involved in secretion, interacts with calmodulin in a calcium-dependent manner and is thus candidate for the calcium-dependent movement of the cytoskeleton at the membrane.

Application Notes

Titration of the SPTBN1 antibody may be required due to differences in protocols and secondary/substrate sensitivity.

Immunogen

A portion of amino acids 2063-2097 from the mouse protein was used as the immunogen for the SPTBN1 antibody.

Storage

Aliquot the SPTBN1 antibody and store frozen at -20oC or colder. Avoid repeated freeze-thaw cycles.