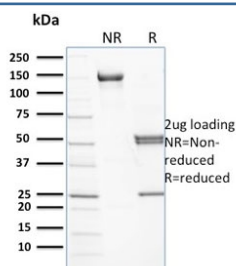


## SPTB Antibody / Spectrin beta [clone RG/26] (V8097)

Catalog No.	Formulation	Size
V8097-100UG	0.2 mg/ml in 1X PBS with 0.1 mg/ml BSA (US sourced) and 0.05% sodium azide	100 ug
V8097-20UG	0.2 mg/ml in 1X PBS with 0.1 mg/ml BSA (US sourced) and 0.05% sodium azide	20 ug
V8097SAF-100UG	1 mg/ml in 1X PBS; BSA free, sodium azide free	100 ug

[Bulk quote request](#)

<b>Availability</b>	1-3 business days
<b>Species Reactivity</b>	Human
<b>Format</b>	Purified
<b>Host</b>	Mouse
<b>Clonality</b>	Monoclonal (mouse origin)
<b>Isotype</b>	Mouse IgG2a, kappa
<b>Clone Name</b>	RG/26
<b>Purity</b>	Protein G affinity chromatography
<b>UniProt</b>	P11277
<b>Applications</b>	Western Blot : 1-2ug/ml Immunofluorescence : 1-2ug/ml Immunohistochemistry (FFPE) : 1-2ug/ml
<b>Limitations</b>	This SPTB antibody is available for research use only.



SDS-PAGE analysis of purified, BSA-free SPTB antibody (clone RG/26) as confirmation of integrity and purity.

## Description

Spectrin is a cytoskeletal protein that lines the intracellular side of the plasma membrane of many cell types in pentagonal or hexagonal arrangements, forming a scaffolding and playing an important role in maintenance of plasma membrane integrity and cytoskeletal structure. In certain types of brain injury such as diffuse axonal injury, spectrin is irreversibly cleaved by the proteolytic enzyme calpain, destroying the cytoskeleton. Spectrin cleavage causes the membrane to form blebs and ultimately to be degraded, usually leading to cell death.

## Application Notes

Optimal dilution of the SPTB antibody should be determined by the researcher.

## Immunogen

Red cell membranes were used as the immunogen for this Spectrin beta antibody.

## Storage

Store the SPTB antibody at 2-8°C (with azide) or aliquot and store at -20°C or colder (without azide).