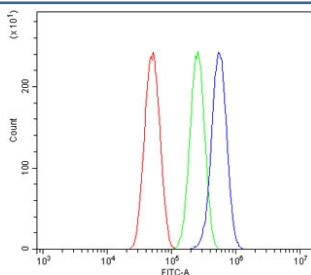


SPRY2 Antibody / Sprouty 2 (RQ6011)

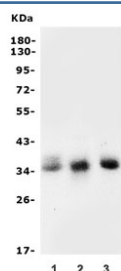
Catalog No.	Formulation	Size
RQ6011	0.5mg/ml if reconstituted with 0.2ml sterile DI water	100 ug

[Bulk quote request](#)

Availability	1-3 business days
Species Reactivity	Human, Mouse, Rat
Format	Antigen affinity purified
Host	Rabbit
Clonality	Polyclonal (rabbit origin)
Isotype	Rabbit IgG
Purity	Affinity purified
Buffer	Lyophilized from 1X PBS with 2% Trehalose and 0.025% sodium azide
UniProt	O43597
Applications	Western Blot : 0.5-1ug/ml Flow Cytometry : 1-3ug/million cells Direct ELISA : 0.1-0.5ug/ml
Limitations	This SPRY2 antibody is available for research use only.



Flow cytometry testing of human U-87 MG cells with SPRY2 antibody at 1ug/million cells (blocked with goat sera); Red=cells alone, Green=isotype control, Blue= SPRY2 antibody.



Western blot testing of 1) human PC-3, 2) rat brain and 3) mouse brain lysate with SPRY2 antibody. Expected molecular weight: 35-39 kDa, may be observed as a doublet.

Description

Sprouty homolog 2 (Drosophila), also known as SPRY2, is a protein which in humans is encoded by the SPRY2 gene. It is mapped to 13q31.1. This gene encodes a protein belonging to the sprouty family. The encoded protein contains a carboxyl-terminal cysteine-rich domain essential for the inhibitory activity on receptor tyrosine kinase signaling proteins and is required for growth factor stimulated translocation of the protein to membrane ruffles. In primary dermal endothelial cells this gene is transiently upregulated in response to fibroblast growth factor two. This protein is indirectly involved in the non-cell autonomous inhibitory effect on fibroblast growth factor two signaling. The protein interacts with Cas-Br-M (murine) ectropic retroviral transforming sequence, and can function as a bimodal regulator of epidermal growth factor receptor/mitogen-activated protein kinase signaling. This protein may play a role in alveoli branching during lung development as shown by a similar mouse protein.

Application Notes

Optimal dilution of the SPRY2 antibody should be determined by the researcher.

Immunogen

Recombinant human protein (amino acids M1-T315) was used as the immunogen for the SPRY2 antibody.

Storage

After reconstitution, the SPRY2 antibody can be stored for up to one month at 4oC. For long-term, aliquot and store at -20oC. Avoid repeated freezing and thawing.