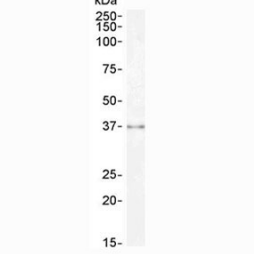


## Sprouty Antibody / SPRY1 (R33305)

| Catalog No.  | Formulation   | Size   |
|--------------|---|--------|
| R33305-100UG | 0.5 mg/ml in 1X TBS, pH7.3, with 0.5% BSA (US sourced) and 0.02% sodium azide | 100 ug |

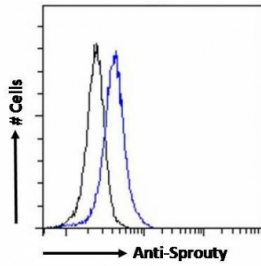
[Bulk quote request](#)

|                           |  |
|---------------------------|--|
| <b>Availability</b>       | 1-3 business days  |
| <b>Species Reactivity</b> | Human, Mouse   |
| <b>Format</b>             | Antigen affinity purified  |
| <b>Host</b>               | Goat   |
| <b>Clonality</b>          | Polyclonal (goat origin)   |
| <b>Isotype</b>            | Goat Ig  |
| <b>Purity</b>             | Antigen affinity   |
| <b>Gene ID</b>            | 10252  |
| <b>Applications</b>       | Western Blot : 0.3-1ug/ml (2)<br>Immunohistochemistry (FFPE) : 1-3ug/ml (1)<br>IF/ICC : 10ug/ml<br>Flow Cytometry : 10ug/10 <sup>6</sup> cells in 0.2ml<br>ELISA (peptide) LOD : 1:16000 |
| <b>Limitations</b>        | This Sprouty antibody is available for research use only.  |

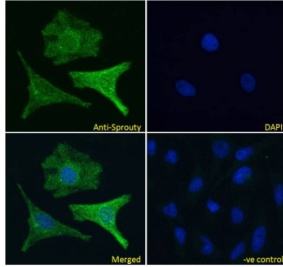


kDa  
250-  
150-  
100-  
75-  
50-  
37-  
25-  
20-  
15-

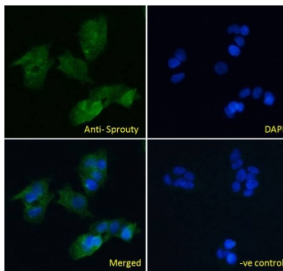
Western blot testing of human kidney lysate with Sprouty antibody at 0.3ug/ml. Predicted molecular weight ~35 kDa.



FACS testing of fixed and permeabilized human HEK293 cells with Sprouty antibody (blue) at 10ug/10<sup>6</sup> cells and naive goat Ig (black).



IF/ICC testing of fixed and permeabilized human HeLa cells with Sprouty antibody (green) at 10ug/ml and DAPI nuclear stain (blue).



IF/ICC testing of fixed and permeabilized human HepG2 cells with Sprouty antibody (green) at 10ug/ml and DAPI nuclear stain (blue).

## Description

Additional name(s) for this target protein: SPRY1; Protein sprouty homolog 1

## Application Notes

Optimal dilution of the Sprouty antibody should be determined by the researcher.

1. Reported by customer to detect Sprouty (nuclear staining) in FFPE mouse brain.
2. Reported by customer to detect Sprouty in embryonal rhabdomyosarcoma (ERMS) lysate.

## Immunogen

Amino acids CPSRGQGKPS were used as the immunogen for this Sprouty antibody.

## Storage

Aliquot and store the Sprouty antibody at -20oC.

