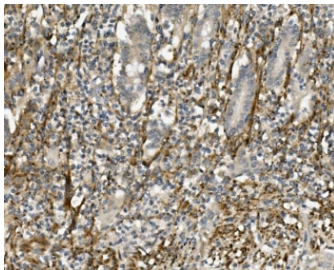


## Sprouty 4 Antibody / SPRY4 (RQ5681)

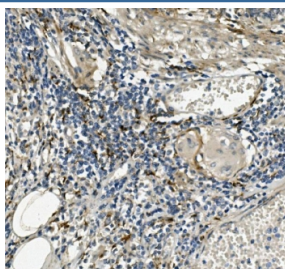
Catalog No.	Formulation	Size
RQ5681	0.5mg/ml if reconstituted with 0.2ml sterile DI water	100 ug

**Bulk quote request**

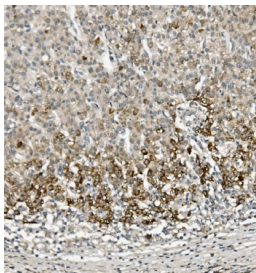
<b>Availability</b>	1-3 business days
<b>Species Reactivity</b>	Human
<b>Format</b>	Antigen affinity purified
<b>Clonality</b>	Polyclonal
<b>Isotype</b>	Rabbit IgG
<b>Purity</b>	Affinity purified
<b>Buffer</b>	Lyophilized from 1X PBS with 2% Trehalose and 0.025% sodium azide
<b>UniProt</b>	Q9C004
<b>Applications</b>	Western Blot : 0.5-1ug/ml Immunohistochemistry : 1-2ug/ml Flow Cytometry : 1-3ug/million cells Direct ELISA : 0.1-0.5ug/ml
<b>Limitations</b>	This Sprouty 4 antibody is available for research use only.



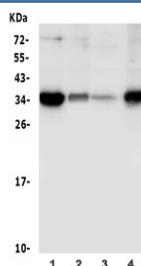
IHC staining of FFPE human rectal cancer with Sprouty 4 antibody. HIER: boil tissue sections in pH8 EDTA for 20 min and allow to cool before testing.



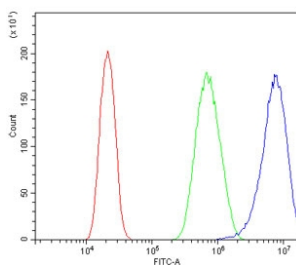
IHC staining of FFPE human rectal cancer with Sprouty 4 antibody. HIER: boil tissue sections in pH8 EDTA for 20 min and allow to cool before testing.



IHC staining of FFPE human liver cancer with Sprouty 4 antibody. HIER: boil tissue sections in pH8 EDTA for 20 min and allow to cool before testing.



Western blot testing of human 1) PC-3, 2) HepG2, 3) K562 and 4) A375 lysate with Sprouty 4 antibody. Predicted molecular weight ~35 kDa.



Flow cytometry testing of human PC-3 cells with Sprouty 4 antibody at 1 ug/million cells (blocked with goat sera); Red=cells alone, Green=isotype control, Blue= Sprouty 4 antibody.

## Description

Protein sprouty homolog 4 is a protein that in humans is encoded by the SPRY4 gene. It is mapped to 5q31.3. This gene encodes a member of a family of cysteine- and proline-rich proteins. The encoded protein is an inhibitor of the receptor-transduced mitogen-activated protein kinase (MAPK) signaling pathway. Activity of this protein impairs the formation of active GTP-RAS. Nucleotide variation in this gene has been associated with hypogonadotropic hypogonadism 17 with or without anosmia. Alternative splicing results in a multiple transcript variants.

## Application Notes

Optimal dilution of the Sprouty 4 antibody should be determined by the researcher.

## Immunogen

Recombinant human protein (amino acids M1-K297) was used as the immunogen for the Sprouty 4 antibody.

## Storage

After reconstitution, the Sprouty 4 antibody can be stored for up to one month at 4oC. For long-term, aliquot and store at -20oC. Avoid repeated freezing and thawing.

