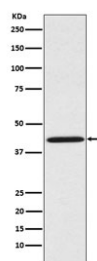


Sprouty 2 Antibody / SPRY2 [clone AFOH-19] (RQ4744)

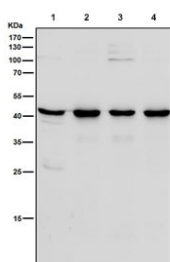
Catalog No.	Formulation	Size
RQ4744	Antibody in PBS with 0.02% sodium azide, 50% glycerol and 0.4-0.5mg/ml BSA	100 ul

[Bulk quote request](#)

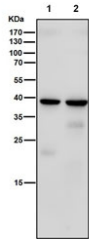
Availability	1-2 weeks
Species Reactivity	Human, Rat
Format	Purified
Host	Rabbit
Clonality	Rabbit Monoclonal
Isotype	Rabbit IgG
Clone Name	AFOH-19
Purity	Affinity purified
UniProt	O43597
Applications	Western Blot : 1:500-1:2000
Limitations	This Sprouty 2 antibody is available for research use only.



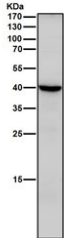
Western blot testing of human HeLa cell lysate with Sprouty 2 antibody. Expected molecular weight: 35-39 kDa, may be observed as a doublet.



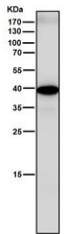
Western blot testing of human 1) A431, 2) HT-29, 3) PC-3 and 4) PANC-1 cell lysate with Sprouty 2 antibody. Expected molecular weight: 35-39 kDa, may be observed as a doublet.



Western blot testing of rat 1) kidney and 2) brain tissue lysate with Sprouty 2 antibody. Expected molecular weight: 35-39 kDa, may be observed as a doublet.



Western blot testing of rat liver tissue lysate with Sprouty 2 antibody. Expected molecular weight: 35-39 kDa, may be observed as a doublet.



Western blot testing of rat heart tissue lysate with Sprouty 2 antibody. Expected molecular weight: 35-39 kDa, may be observed as a doublet.

Description

May function as an antagonist of fibroblast growth factor (FGF) pathways and may negatively modulate respiratory organogenesis.

Application Notes

Optimal dilution of the Sprouty 2 antibody should be determined by the researcher.

Immunogen

A synthetic peptide specific to human Sprouty 2 / SPRY2 was used as the immunogen for the Sprouty 2 antibody.

Storage

Store the Sprouty 2 antibody at -20oC.