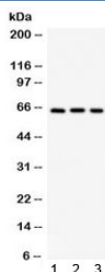


SPP1 Antibody (R31935)

Catalog No.	Formulation	Size
R31935	0.5mg/ml if reconstituted with 0.2ml sterile DI water	100 ug

[Bulk quote request](#)

Availability	1-3 business days
Species Reactivity	Human, Mouse, Rat
Format	Antigen affinity purified
Host	Rabbit
Clonality	Polyclonal (rabbit origin)
Isotype	Rabbit IgG
Purity	Antigen affinity
Buffer	Lyophilized from 1X PBS with 2.5% BSA and 0.025% sodium azide
UniProt	P10451
Localization	Cytoplasmic
Applications	Western Blot : 0.1-0.5ug/ml ELISA : 0.1-0.5ug/ml (human protein tested); request BSA-free format for coating
Limitations	This SPP1 antibody is available for research use only.



Western blot testing of 1) mouse pancreas, 2) human Jurkat and 3) human HepG2 lysate with SPP1 antibody. Expected/observed molecular weight: 35/60-65 kDa (unmodified/glycosylated).

Description

Osteopontin (OPN), also known as secreted phosphoprotein 1 (SPP1), is a protein that in humans is encoded by the SPP1 gene (secreted phosphoprotein 1). The protein encoded by this gene is involved in the attachment of osteoclasts to the mineralized bone matrix. And the encoded protein is secreted and binds hydroxyapatite with high affinity. The osteoclast vitronectin receptor is found in the cell membrane and may be involved in the binding to this protein. Also, this

protein is a cytokine that upregulates expression of interferon-gamma and interleukin-12. Several transcript variants encoding different isoforms have been found for this gene.

Application Notes

Optimal dilution of the SPP1 antibody should be determined by the researcher.

Immunogen

Amino acids HEDMLVDPKSKEEDKHLKFRISHELDSASSEVN of human Osteopontin/SPP1 were used as the immunogen for the SPP1 antibody.

Storage

After reconstitution, the SPP1 antibody can be stored for up to one month at 4oC. For long-term, aliquot and store at -20oC. Avoid repeated freezing and thawing.