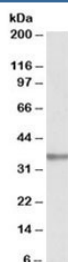


SPON2 Antibody (R35655)

Catalog No.	Formulation	Size
R35655-100UG	0.5 mg/ml in 1X TBS, pH7.3, with 0.5% BSA (US sourced) and 0.02% sodium azide	100 ug

[Bulk quote request](#)

Availability	1-3 business days
Species Reactivity	Human
Predicted Reactivity	Cow, Mouse, Rat
Format	Antigen affinity purified
Clonality	Polyclonal (goat origin)
Isotype	Goat Ig
Purity	Antigen affinity
Gene ID	10417
Applications	Western Blot : 0.5-1.5ug/ml ELISA (peptide) LOD : 1:16000
Limitations	This SPON2 antibody is available for research use only.



Western blot testing of human prostate lysate with SPON2 antibody at 1ug/ml.
Predicted/observed molecular weight: ~35kDa.

Description

Additional name(s) for this target protein: Spondin 2, Mindin

Application Notes

Optimal dilution of the SPON2 antibody should be determined by the researcher.

Immunogen

Amino acids RKNQYVSNGLRDFA were used as the immunogen for this SPON2 antibody.

Storage

Aliquot and store the SPON2 antibody at -20oC.