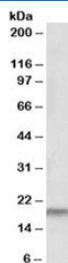


SPINT2 Antibody (R35148)

| Catalog No. | Formulation | Size |
|--------------|---|--------|
| R35148-100UG | 0.5 mg/ml in 1X TBS, pH7.3, with 0.5% BSA (US sourced) and 0.02% sodium azide | 100 ug |

[Bulk quote request](#)

| | |
|----------------------|--|
| Availability | 1-3 business days |
| Species Reactivity | Human |
| Predicted Reactivity | Cow, Dog |
| Format | Antigen affinity purified |
| Host | Goat |
| Clonality | Polyclonal (goat origin) |
| Isotype | Goat Ig |
| Purity | Antigen affinity |
| Gene ID | 10653 |
| Applications | Western Blot : 0.3-1ug/ml ELISA (peptide) LOD : 1:16000 |
| Limitations | This SPINT2 antibody is available for research use only. |



Western blot testing of human placenta lysate with SPINT2 antibody at 0.3ug/ml.
Predicted molecular weight: ~22kDa.

Description

Additional name(s) for this target protein: Serine peptidase inhibitor, Kunitz type, 2

Application Notes

Optimal dilution of the SPINT2 antibody should be determined by the researcher.

Immunogen

Amino acids PSAPRRQDSEDH were used as the immunogen for this SPINT2 antibody.

Storage

Aliquot and store the SPINT2 antibody at -20oC.