

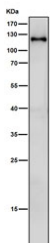
## SPINK5 Antibody / Serine protease inhibitor Kazal-type 5 [clone 29S14] (RQ8860)

| Catalog No. | Formulation  | Size   |
|-------------|--|--------|
| RQ8860      | Antibody in PBS with 0.02% sodium azide, 50% glycerol and 0.4-0.5mg/ml BSA | 100 ul |

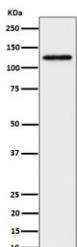
Recombinant **RABBIT MONOCLONAL**

[Bulk quote request](#)

|                           |  |
|---------------------------|--|
| <b>Availability</b>       | 1-2 days   |
| <b>Species Reactivity</b> | Human, Mouse, Rat  |
| <b>Format</b>             | Purified   |
| <b>Host</b>               | Rabbit   |
| <b>Clonality</b>          | Recombinant Rabbit Monoclonal                            |
| <b>Isotype</b>            | Rabbit IgG   |
| <b>Clone Name</b>         | 29S14  |
| <b>Purity</b>             | Affinity chromatography                                  |
| <b>UniProt</b>            | Q9NQ38   |
| <b>Applications</b>       | Western Blot : 1:500-1:2000                              |
| <b>Limitations</b>        | This SPINK5 antibody is available for research use only. |



Western blot testing of mouse lung tissue lysate with SPINK5 antibody. Predicted molecular weight ~121 kDa.



Western blot testing of human HeLa cell lysate with SPINK5 antibody. Predicted molecular weight ~121 kDa.

## Description

SPINK5 works by regulating the activity of enzymes called serine proteases, which play a crucial role in maintaining skin barrier function. By inhibiting these enzymes, SPINK5 helps to protect the skin from damage and maintain its overall health and integrity. One of the key functions of SPINK5 is its ability to prevent excessive inflammation in the skin. Inflammation can cause many skin issues, including redness, irritation, and even conditions like eczema and psoriasis. By blocking the activity of serine proteases, SPINK5 helps to calm inflammation and promote a more balanced and healthy complexion. SPINK5 also plays a vital role in maintaining proper hydration levels in the skin.

## Application Notes

Optimal dilution of the SPINK5 antibody should be determined by the researcher.

## Immunogen

A synthetic peptide specific to human SPINK5 protein was used as the immunogen for the SPINK5 antibody.

## Storage

Store the SPINK5 antibody at -20°C.