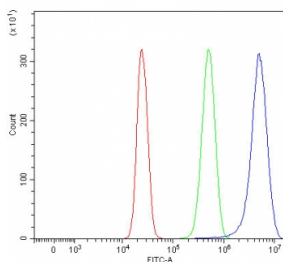


Sphingosine kinase 1 Antibody / SPHK1 (RQ7823)

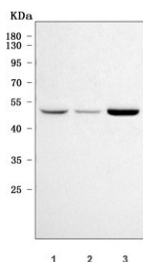
Catalog No.	Formulation	Size
RQ7823	0.5mg/ml if reconstituted with 0.2ml sterile DI water	100 ug

Bulk quote request

Availability	1-3 business days
Species Reactivity	Human
Format	Antigen affinity purified
Clonality	Polyclonal (rabbit origin)
Isotype	Rabbit IgG
Purity	Antigen affinity purified
Buffer	Lyophilized from 1X PBS with 2% Trehalose
UniProt	Q9NYA1
Applications	Western Blot : 0.5-1ug/ml Flow Cytometry : 1-3ug/million cells Direct ELISA : 0.1-0.5ug/ml
Limitations	This Sphingosine kinase 1 antibody is available for research use only.



Flow cytometry testing of human HepG2 cells with Sphingosine kinase 1 antibody at 1ug/million cells (blocked with goat sera); Red=cells alone, Green=isotype control, Blue=Sphingosine kinase 1 antibody.



Western blot testing of human 1) HeLa, 2) HepG2 and 3) MCF7 cell lysate with Sphingosine kinase 1 antibody. Predicted molecular weight: ~43/51/44 kDa (isoforms 1/2/3).

Description

SPHK1 (Sphingosine Kinase 1), is an enzyme that in humans is encoded by the SPHK1 gene. Melendez et al.(2000) mapped the SPHK1 gene to chromosome 17q25.2 based on sequence identity with ESTs mapped to this region. Kohama et al.(1998) demonstrated that recombinant mouse Sphk1 can specifically phosphorylate D-erythro-sphingosine and that D, L-threo-dihydrosphingosine and N, N-dimethylsphingosine can act as competitive inhibitors of recombinant Sphk1. Pitson et al.(2000) found that recombinant SPHK1 and endogenous SPHK1 purified from placenta had identical enzymatic characteristics, suggesting posttranslational modification does not effect functional properties.

Application Notes

Optimal dilution of the Sphingosine kinase 1 antibody should be determined by the researcher.

Immunogen

E. coli-derived recombinant human protein (amino acids E55-N357) was used as the immunogen for the Sphingosine kinase 1 antibody.

Storage

After reconstitution, the Sphingosine kinase 1 antibody can be stored for up to one month at 4oC. For long-term, aliquot and store at -20oC. Avoid repeated freezing and thawing.