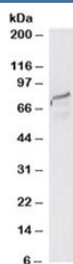


## SPG20 Antibody (R33716)

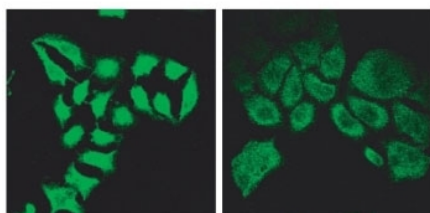
| Catalog No.  | Formulation   | Size   |
|--------------|---|--------|
| R33716-100UG | 0.5 mg/ml in 1X TBS, pH7.3, with 0.5% BSA (US sourced) and 0.02% sodium azide | 100 ug |

[Bulk quote request](#)

|                    |  |
|--------------------|--|
| Availability       | 1-3 business days  |
| Species Reactivity | Human  |
| Format             | Antigen affinity purified  |
| Clonality          | Polyclonal (goat origin)   |
| Isotype            | Goat Ig  |
| Purity             | Antigen affinity   |
| Gene ID            | 23111  |
| Applications       | Western Blot : 1-3ug/ml<br>Immunofluorescence : suitable<br>ELISA (peptide) LOD : 1:8000 |
| Limitations        | This SPG20 antibody is available for research use only.                                  |



Western blot testing of HeLa lysate with SPG20 antibody at 2ug/ml. Predicted molecular weight: ~73kDa.



Immunofluorescence testing of methanol-fixed HeLa cells before (left) and after (right) introduction of siRNA using SPG20 antibody at 2ug/ml.

## Description

Additional name(s) for this target protein: SPARTIN

## Application Notes

Optimal dilution of the SPG20 antibody should be determined by the researcher.

## Immunogen

Amino acids EASGTDVKQLDQGNK were used as the immunogen for this SPG20 antibody.

## Storage

Aliquot and store the SPG20 antibody at -20oC.