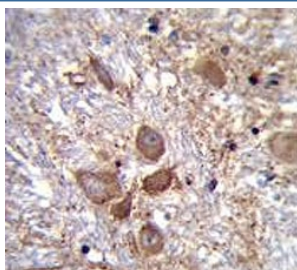


SPECC1L Antibody / Cytospin A (F54361)

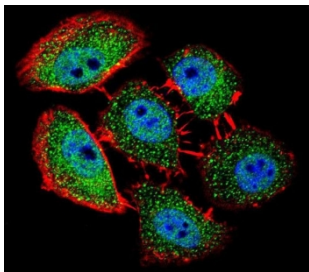
Catalog No.	Formulation	Size
F54361-0.4ML	In 1X PBS, pH 7.4, with 0.09% sodium azide	0.4 ml
F54361-0.08ML	In 1X PBS, pH 7.4, with 0.09% sodium azide	0.08 ml

[Bulk quote request](#)

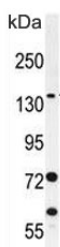
Availability	1-3 business days
Species Reactivity	Human
Format	Purified
Clonality	Polyclonal (rabbit origin)
Isotype	Rabbit Ig
Purity	Antigen affinity purified
UniProt	Q69YQ0
Localization	Cytoplasmic
Applications	Immunofluorescence : 1:25 Flow Cytometry : 1:25 (1x10e6 cells) Immunohistochemistry (FFPE) : 1:25 Western Blot : 1:500-1:2000
Limitations	This SPECC1L antibody is available for research use only.



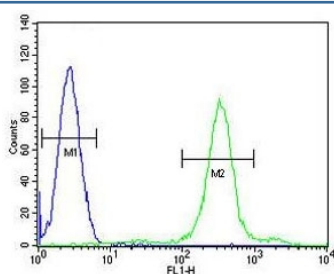
IHC testing of FFPE human brain tissue with SPECC1L antibody. HIER: steam section in pH6 citrate buffer for 20 min and allow to cool prior to staining.



Immunofluorescent staining of fixed and permeabilized human U-251 MG cells with SPECC1L antibody (green), DAPI nuclear stain (blue) and anti-Actin (red).



Western blot testing of human HL60 cell lysate with SPECC1L antibody. Predicted molecular weight ~125 kDa.



Flow cytometry testing of fixed and permeabilized human HL60 cells with SPECC1L antibody; Blue=isotype control, Green= SPECC1L antibody.

Description

Involved in cytokinesis and spindle organization. May play a role in actin cytoskeleton organization and microtubule stabilization and hence required for proper cell adhesion and migration. [UniProt]

Application Notes

The stated application concentrations are suggested starting points. Titration of the SPECC1L antibody may be required due to differences in protocols and secondary/substrate sensitivity.

Immunogen

A portion of amino acids 705-733 from the human protein was used as the immunogen for the SPECC1L antibody.

Storage

Aliquot the SPECC1L antibody and store frozen at -20°C or colder. Avoid repeated freeze-thaw cycles.