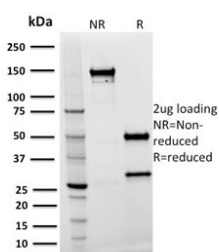


Spastin Antibody [clone Sp 3G11-1] (V8093)

Catalog No.	Formulation	Size
V8093-100UG	0.2 mg/ml in 1X PBS with 0.1 mg/ml BSA (US sourced) and 0.05% sodium azide	100 ug
V8093-20UG	0.2 mg/ml in 1X PBS with 0.1 mg/ml BSA (US sourced) and 0.05% sodium azide	20 ug
V8093SAF-100UG	1 mg/ml in 1X PBS; BSA free, sodium azide free	100 ug

[Bulk quote request](#)

Availability	1-3 business days
Species Reactivity	Human, Mouse, Rat
Format	Purified
Host	Mouse
Clonality	Monoclonal (mouse origin)
Isotype	Mouse IgG2a, kappa
Clone Name	Sp 3G11-1
Purity	Protein G affinity chromatography
UniProt	Q9UP0
Applications	Immunofluorescence : 1-2ug/ml Western Blot : 1-2ug/ml Immunohistochemistry (FFPE) : 1-2ug/ml
Limitations	This Spastin antibody is available for research use only.



SDS-PAGE analysis of purified, BSA-free Spastin antibody (clone Sp 3G11-1) as confirmation of integrity and purity.

Description

The AAA protein family members share an ATPase domain and have roles in various cellular processes including intracellular motility, membrane trafficking, proteolysis, protein folding and organelle biogenesis. Spastin, a member of the AAA protein family, is a 616 amino acid protein and is involved in the function or assembly of nuclear protein complexes. The Spastin protein is expressed ubiquitously and localizes to the nucleus and the cytoplasm, where it may also be involved in microtubule dynamics. Mutations in the Spastin gene (SPAST, SPG4) cause the most common form of spastic paraplegia 4, an autosomal dominant form of hereditary spastic paraplegia (HSP). HSPs comprise a group of inherited neurological disorders characterized by spastic lower extremity weakness due to a length-dependent, retrograde axonopathy of corticospinal motor neurons. SPAST-specific mutations account for approximately 40% of all autosomal dominant HSPs.

Application Notes

Optimal dilution of the Spastin antibody should be determined by the researcher.

Immunogen

Recombinant full length human Spastin protein was used as the immunogen for the Spastin antibody.

Storage

Store the Spastin antibody at 2-8oC (with azide) or aliquot and store at -20oC or colder (without azide).