

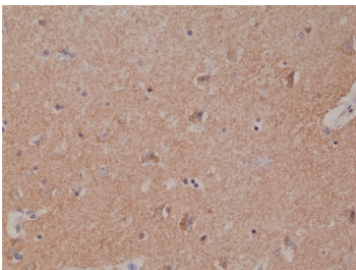
## Spastin Antibody [clone RM346] (R20368)

Catalog No.	Formulation	Size
R20368-0.1ML	Antibody in PBS with 50% glycerol, 1% BSA and 0.09% sodium azide	100 ul

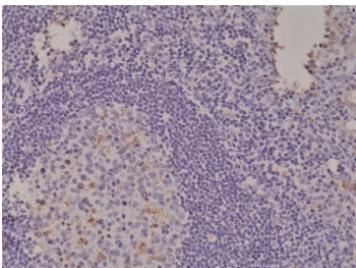
Recombinant **RABBIT MONOCLONAL**

[Bulk quote request](#)

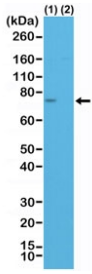
<b>Availability</b>	1-3 business days
<b>Species Reactivity</b>	Human
<b>Format</b>	Purified
<b>Host</b>	Rabbit
<b>Clonality</b>	Recombinant Rabbit Monoclonal
<b>Isotype</b>	Rabbit IgG
<b>Clone Name</b>	RM346
<b>Purity</b>	Protein A purified from animal origin-free supernatant
<b>UniProt</b>	Q9UBP0
<b>Localization</b>	Cytoplasmic, nuclear
<b>Applications</b>	Immunohistochemistry (FFPE) : 1:500-1:1000 Western Blot : 1:500-1:1000
<b>Limitations</b>	This recombinant Spastin antibody is available for research use only.



IHC staining of FFPE human brain tissue with recombinant Spastin antibody at 1:1000.



IHC staining of FFPE human tonsil tissue with recombinant Spastin antibody at 1:1000.



Western blot testing of lysate from human HeLa cells transfected with control siRNA (1) or Spastin siRNA, using recombinant Spastin antibody at 1:500.

## Description

This antibody reacts to human Spastin.

## Application Notes

The stated application concentrations are suggested starting points. Titration of the recombinant Spastin antibody may be required due to differences in protocols and secondary/substrate sensitivity.

## Immunogen

A peptide corresponding to the N-terminus of human Spastin was used as the immunogen for the recombinant Spastin antibody.

## Storage

Store the recombinant Spastin antibody at -20°C.