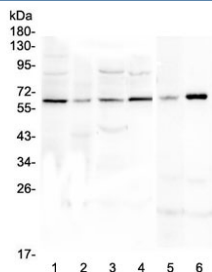


SPARCL1 Antibody / SPARC-Like 1 (RQ4474)

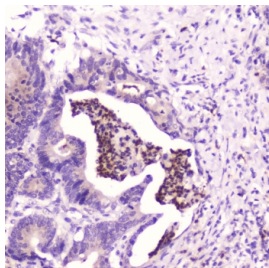
Catalog No.	Formulation	Size
RQ4474	0.5mg/ml if reconstituted with 0.2ml sterile DI water	100 ug

[Bulk quote request](#)

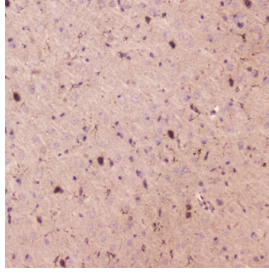
Availability	1-3 business days
Species Reactivity	Human, Mouse, Rat
Format	Antigen affinity purified
Host	Rabbit
Clonality	Polyclonal (rabbit origin)
Isotype	Rabbit IgG
Purity	Antigen affinity
Buffer	Lyophilized from 1X PBS with 2% Trehalose and 0.025% sodium azide
UniProt	Q14515
Localization	Cytoplasmic, secreted
Applications	Western Blot : 0.5-1ug/ml Immunohistochemistry (FFPE) : 1-2ug/ml
Limitations	This SPARCL1 antibody is available for research use only.



Western blot testing of human 1) U-87 MG, 2) SHG-44, 3) MDA-MB-231, 4) K562, 5) rat C6 and 6) mouse smooth muscle (intestine) lysate. Predicted molecular weight ~75 kDa, observed here at ~62 kDa.



IHC testing of FFPE human colon cancer with SPARCL1 antibody at 2ug/ml. HIER: boil tissue sections in pH6, 10mM citrate buffer, for 10-20 min followed by cooling at RT for 20 min.



IHC testing of FFPE mouse brain with SPARCL1 antibody at 2ug/ml. HIER: boil tissue sections in pH6, 10mM citrate buffer, for 10-20 min followed by cooling at RT for 20 min.

Description

SPARCL1 (SPARC-Like Protein 1), also known as HEVIN, is a protein that in humans is encoded by the SPARCL1 gene. The cells in high endothelial venules (HEVs) in lymphoid tissues have a plump, almost cuboidal, appearance and support high levels of lymphocyte extravasation from blood, possibly due to the presence of desmosome-like junctions rather than tight junctions in the HEVs. In chronic inflammation, the activated endothelium of nonlymphoid tissues acquires an HEV-like morphology and function. Hevin is highly expressed in HEV and is thought to contribute to the induction or maintenance of features of the HEV endothelium that facilitate lymphocyte migration.

Application Notes

Optimal dilution of the SPARCL1 antibody should be determined by the researcher.

Immunogen

Amino acids ITRFFEECDPNKDKHITLKEWGHCFGIKEEDIDENLLF were used as the immunogen for the SPARCL1 antibody.

Storage

After reconstitution, the SPARCL1 antibody can be stored for up to one month at 4oC. For long-term, aliquot and store at -20oC. Avoid repeated freezing and thawing.