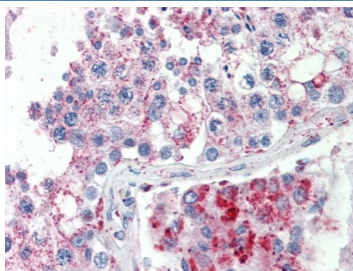


SPAG16 Antibody (R36491)

Catalog No.	Formulation	Size
R36491-100UG	0.5 mg/ml in 1X TBS, pH7.3, with 0.5% BSA (US sourced) and 0.02% sodium azide	100 ug

[Bulk quote request](#)

Availability	1-3 business days
Species Reactivity	Human
Predicted Reactivity	Mouse, Dog, Cow
Format	Antigen affinity purified
Host	Goat
Clonality	Polyclonal (goat origin)
Isotype	Goat Ig
Purity	Antigen affinity
UniProt	Q8N0X2
Localization	Cytoplasmic
Applications	IHC (FFPE) : 5-10ug/ml ELISA (peptide) LOD : 1:32000
Limitations	This SPAG16 antibody is available for research use only.



IHC testing of FFPE human testis tissue with SPAG16 antibody at 5ug/ml. HIER: steamed antigen retrieval with pH6 citrate buffer; AP-staining.

Description

Alternate name(s) for this target: Sperm associated antigen 16; sperm-associated WD repeat protein; WD repeat domain 29; WDR29

Application Notes

Optimal dilution of the SPAG16 antibody should be determined by the researcher.

Immunogen

Amino acids KLHYASYEPTIR were used as the immunogen for this SPAG16 antibody.

Storage

Aliquot and store the SPAG16 antibody at -20oC.