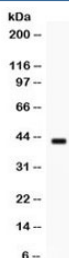


## Sp5 Antibody (R32265)

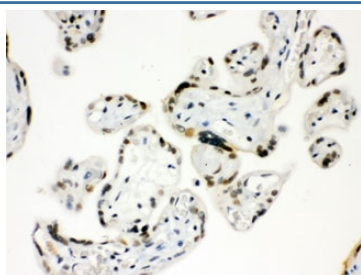
Catalog No.	Formulation	Size
R32265	0.5mg/ml if reconstituted with 0.2ml sterile DI water	100 ug

**Bulk quote request**

<b>Availability</b>	1-3 business days
<b>Species Reactivity</b>	Human
<b>Format</b>	Antigen affinity purified
<b>Clonality</b>	Polyclonal (rabbit origin)
<b>Isotype</b>	Rabbit IgG
<b>Purity</b>	Antigen affinity
<b>Buffer</b>	Lyophilized from 1X PBS with 2.5% BSA and 0.025% sodium azide
<b>UniProt</b>	Q6BEB4
<b>Localization</b>	Nuclear
<b>Applications</b>	Western Blot : 0.1-0.5ug/ml Immunohistochemistry (FFPE) : 0.5-1ug/ml
<b>Limitations</b>	This Sp5 antibody is available for research use only.



Western blot testing of human MCF7 cell lysate with Sp5 antibody. Expected/observed molecular weight ~42 kDa.



IHC testing of FFPE human placenta with Sp5 antibody. HIER: Boil the paraffin sections in pH 6, 10mM citrate buffer for 20 minutes and allow to cool prior to staining.

## Description

Sp5 is mapped to 2q31.1. It is a member of the Sp family of zinc finger transcription factors. Like other family members, the Sp5 protein contains a Cys2His2 zinc finger DNA binding domain at the C-terminus. Elevated expression of Sp5 has been noted in several human tumors including hepatocellular carcinoma, gastric cancer and colon cancer.

## Application Notes

Optimal dilution of the Sp5 antibody should be determined by the researcher.

## Immunogen

Amino acids DFAQYQSQIAALLQTKAPLAATARRCRRCR of human Sp5 were used as the immunogen for the Sp5 antibody.

## Storage

After reconstitution, the Sp5 antibody can be stored for up to one month at 4°C. For long-term, aliquot and store at -20°C. Avoid repeated freezing and thawing.