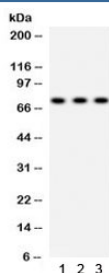


SP2 Antibody (R32182)

Catalog No.	Formulation	Size
R32182	0.5mg/ml if reconstituted with 0.2ml sterile DI water	100 ug

Bulk quote request

Availability	1-3 business days
Species Reactivity	Human, Rat
Format	Antigen affinity purified
Clonality	Polyclonal (rabbit origin)
Isotype	Rabbit IgG
Purity	Antigen affinity
Buffer	Lyophilized from 1X PBS with 2.5% BSA and 0.025% sodium azide
UniProt	Q02086
Localization	Nuclear
Applications	Western Blot : 0.1-0.5ug/ml
Limitations	This SP2 antibody is available for research use only.



Western blot testing of 1) rat lung, 2) human A549 and 3) HeLa lysate with SP2 antibody. Expected/observed molecular weight ~72 kDa.

Description

Transcription factor Sp2 is a protein that in humans is encoded by the SP2 gene. This gene encodes a member of the Sp subfamily of Sp/XKLF transcription factors. Sp family proteins are sequence-specific DNA-binding proteins characterized by an amino-terminal trans-activation domain and three carboxy-terminal zinc finger motifs. This protein contains the least conserved DNA-binding domain within the Sp subfamily of proteins, and its DNA sequence specificity differs from the other Sp proteins. It localizes primarily within subnuclear foci associated with the nuclear matrix, and can activate or in some cases repress expression from different promoters.

Application Notes

Optimal dilution of the SP2 antibody should be determined by the researcher.

Immunogen

Amino acids QVVQIPQQALRVVQAASATLPTVPQKPSQNFQ of human SP2 were used as the immunogen for the SP2 antibody.

Storage

After reconstitution, the SP2 antibody can be stored for up to one month at 4°C. For long-term, aliquot and store at -20°C. Avoid repeated freezing and thawing.