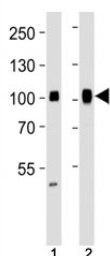


SP1 Antibody / Specificity Protein 1 [clone 1326CT463.109.176] (F52486)

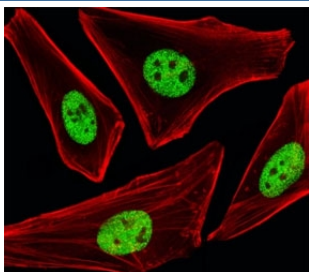
Catalog No.	Formulation	Size
F52486-0.4ML	In 1X PBS, pH 7.4, with 0.09% sodium azide	0.4 ml
F52486-0.08ML	In 1X PBS, pH 7.4, with 0.09% sodium azide	0.08 ml

[Bulk quote request](#)

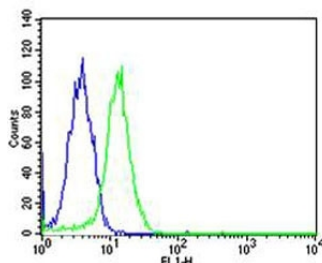
Availability	1-3 business days
Species Reactivity	Human
Format	Purified
Host	Mouse
Clonality	Monoclonal (mouse origin)
Isotype	Mouse IgG1, k
Clone Name	1326CT463.109.176
Purity	Purified
UniProt	P08047
Applications	Flow Cytometry : 1:25 Immunofluorescence : 1:25 Western Blot : 1:1000
Limitations	This SP1 antibody is available for research use only.



Western blot analysis of lysate from human (1) HeLa and (2) Ramos cell line using SP1 antibody at 1:1000. Reported molecular weight: 81-95 kDa.



Fluorescent image of human HeLa cells stained with SP1 antibody at 1:25 dilution. An Alexa Fluor 488-conjugated goat anti-mouse IgG was used as the secondary Ab (green). Cytoplasmic actin was counterstained with Alexa Fluor 555 conjugated with Phalloidin (red).



Flow cytometric analysis of human HeLa cells using SP1 antibody (green) and an isotype control of mouse IgG1 (blue); Ab was diluted at 1:25 dilution.

Description

Specificity Protein 1/SP1 is a transcription factor that can activate or repress transcription in response to physiological and pathological stimuli. Binds with high affinity to GC-rich motifs and regulates the expression of a large number of genes involved in a variety of processes such as cell growth, apoptosis, differentiation and immune responses. Highly regulated by post-translational modifications (phosphorylations, sumoylation, proteolytic cleavage, glycosylation and acetylation). Binds also the PDGFR- alpha G-box promoter. May have a role in modulating the cellular response to DNA damage. Implicated in chromatin remodeling. In complex with ATF7IP, maintains telomerase activity in cancer cells by inducing TERT and TERC gene expression. [UniProt]

Application Notes

Titration of the SP1 antibody may be required due to differences in protocols and secondary/substrate sensitivity.

Immunogen

This SP1 antibody was produced from a mouse immunized with recombinant Specificity Protein 1.

Storage

Aliquot the SP1 antibody and store frozen at -20oC or colder. Avoid repeated freeze-thaw cycles.