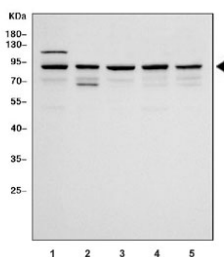


SP1 Antibody / Specific Protein 1 (R31910)

Catalog No.	Formulation	Size
R31910	0.5mg/ml if reconstituted with 0.2ml sterile DI water	100 ug

[Bulk quote request](#)

Availability	1-3 business days
Species Reactivity	Human, Rat
Format	Antigen affinity purified
Host	Rabbit
Clonality	Polyclonal (rabbit origin)
Isotype	Rabbit IgG
Purity	Antigen affinity
Buffer	Lyophilized from 1X PBS with 2% Trehalose and 0.025% sodium azide
UniProt	P08047
Applications	Western Blot : 0.1-0.5ug/ml
Limitations	This SP1 antibody is available for research use only.



Western blot testing of 1) human HeLa, 2) human Caco-2, 3) human Jurkat, 4) human COLO-320 and 5) rat testis tissue lysate with SP1 antibody. Expected molecular weight: 81-95 kDa.

Description

SP1 (transcription factor Sp1), also known as Specificity Protein 1, is a human transcription factor involved in gene expression in the early development of an organism. It belongs to the Sp/KLF family of transcription factors. The protein is 785 amino acids long, with a molecular weight of 81 kDa. By fluorescence in situ hybridization, Matera and Ward (1993) mapped the SP1 gene to 12q13. By in situ hybridization, Gaynor et al. (1993) concluded that 12q13.1 is the most probable location of the SP1 gene. Segmentation in Drosophila is based on a cascade of hierarchical gene interactions initiated by maternally deposited morphogens that define the spatially restricted domains of gap gene expression at blastoderm. The formation of 7 head segments depends on the function of several genes. Wimmer et al. (1993) showed

that one of these genes is the Drosophila homolog of the human transcription factor SP1.

Application Notes

Optimal dilution of the SP1 antibody should be determined by the researcher.

Immunogen

Amino acids EAICPEGIARLANSGINVMQVADLQSINISGNGF of human SP1 were used as the immunogen for the SP1 antibody.

Storage

After reconstitution, the SP1 antibody can be stored for up to one month at 4oC. For long-term, aliquot and store at -20oC. Avoid repeated freezing and thawing.