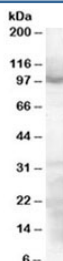


## SP1 Antibody (R33344)

Catalog No.	Formulation	Size
R33344-100UG	0.5 mg/ml in 1X TBS, pH7.3, with 0.5% BSA (US sourced) and 0.02% sodium azide	100 ug

[Bulk quote request](#)

Availability	1-3 business days
Species Reactivity	Human, Mouse
Predicted Reactivity	Cow, Dog, Pig, Rat
Format	Antigen affinity purified
Host	Goat
Clonality	Polyclonal (goat origin)
Isotype	Goat Ig
Purity	Antigen affinity
Gene ID	6667
Applications	Western Blot : 0.3-1ug/ml ELISA (peptide) LOD : 1:16000
Limitations	This SP1 antibody is available for research use only.



Western blot testing of HeLa lysate with SP1 antibody at 0.3ug/ml. Predicted molecular weight ~81kDa but routinely observed at ~95kDa.

## Description

Additional name(s) for this target protein: Specificity protein 1; Transcription factor Sp1

## Application Notes

Optimal dilution of the SP1 antibody should be determined by the researcher.

## **Immunogen**

Amino acids CSRIESPNENSNNNSQ were used as the immunogen for this SP1 antibody.

## **Storage**

Aliquot and store the SP1 antibody at -20oC.