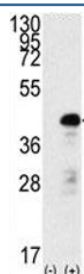


## SOX2 Antibody (F47909)

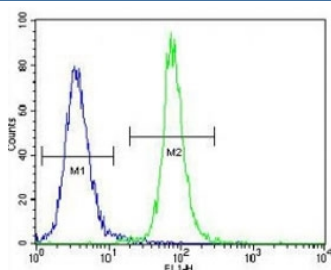
Catalog No.	Formulation	Size
F47909-0.4ML	In 1X PBS, pH 7.4, with 0.09% sodium azide	0.4 ml
F47909-0.08ML	In 1X PBS, pH 7.4, with 0.09% sodium azide	0.08 ml

[Bulk quote request](#)

<b>Availability</b>	1-3 business days
<b>Species Reactivity</b>	Human
<b>Format</b>	Purified
<b>Host</b>	Rabbit
<b>Clonality</b>	Polyclonal (rabbit origin)
<b>Isotype</b>	Rabbit Ig
<b>Purity</b>	Purified
<b>UniProt</b>	P48431
<b>Localization</b>	Cytoplasmic, nuclear
<b>Applications</b>	Western Blot : 1:1000 Flow Cytometry : 1:10-1:50
<b>Limitations</b>	This SOX2 antibody is available for research use only.



Western blot analysis of SOX2 antibody and 293 cell lysate (2 ug/lane) either nontransfected (Lane 1) or transiently transfected with the SOX2 gene (2).



SOX2 antibody flow cytometric analysis of 293 cells (right histogram) compared to a negative control cell (left histogram). FITC-conjugated goat-anti-rabbit secondary Ab was used for the analysis.

## Description

SOX2 is a member of the SRY-related HMG-box (SOX) family of transcription factors involved in the regulation of embryonic development and in the determination of cell fate. This protein may act as a transcriptional activator after forming a protein complex with other proteins. Mutations in the SOX2 gene have been associated with bilateral anophthalmia, a severe form of structural eye malformation.

## Application Notes

Titration of the SOX2 antibody may be required due to differences in protocols and secondary/substrate sensitivity.

## Immunogen

This SOX2 antibody was produced from rabbits immunized with a recombinant protein of human SOX2.

## Storage

Aliquot the SOX2 antibody and store frozen at -20oC or colder. Avoid repeated freeze-thaw cycles.