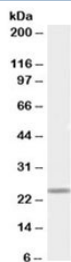


SOX15 Antibody (R33339)

Catalog No.	Formulation	Size
R33339-100UG	0.5 mg/ml in 1X TBS, pH7.3, with 0.5% BSA (US sourced) and 0.02% sodium azide	100 ug

[Bulk quote request](#)

Availability	1-3 business days
Species Reactivity	Human
Format	Antigen affinity purified
Host	Goat
Clonality	Polyclonal (goat origin)
Isotype	Goat Ig
Purity	Antigen affinity
Gene ID	6665
Applications	Western Blot : 0.1-0.3ug/ml ELISA (peptide) LOD : 1:16000
Limitations	This SOX15 antibody is available for research use only.



Western blot testing of human muscle lysate with SOX15 antibody at 0.1ug/ml. Predicted molecular weight: ~25kDa.

Description

Additional name(s) for this target protein: SRY (sex determining region Y)-box 15

Application Notes

Optimal dilution of the SOX15 antibody should be determined by the researcher.

Immunogen

Amino acids CSLPQSDPRLQGE were used as the immunogen for this SOX15 antibody.

Storage

Aliquot and store the SOX15 antibody at -20oC.