

SOX10 Antibody [clone SBX10-1] (V3508)

Catalog No.	Formulation	Size
V3508-100UG	0.2 mg/ml in 1X PBS with 0.1 mg/ml BSA (US sourced) and 0.05% sodium azide	100 ug
V3508-20UG	0.2 mg/ml in 1X PBS with 0.1 mg/ml BSA (US sourced) and 0.05% sodium azide	20 ug
V3508SAF-100UG	1 mg/ml in 1X PBS; BSA free, sodium azide free	100 ug
V3508IHC-7ML	Prediluted in 1X PBS with 0.1 mg/ml BSA (US sourced) and 0.05% sodium azide; *For IHC use only*	7 ml

Bulk quote request

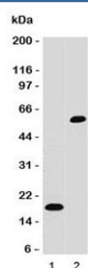
Availability	1-3 business days
Species Reactivity	Human
Format	Purified
Host	Mouse
Clonality	Monoclonal (mouse origin)
Isotype	Mouse IgG2b, kappa
Clone Name	SBX10-1
Purity	Protein G affinity chromatography
UniProt	P56693
Localization	Nuclear
Applications	Western Blot : 1-2ug/ml Immunohistochemistry (FFPE) : 1-2ug/ml for 30 min at RT Prediluted IHC Only Format : incubate for 30 min at RT (1)
Limitations	This SOX10 antibody is available for research use only.

Human Protein Microarray Specificity Validation

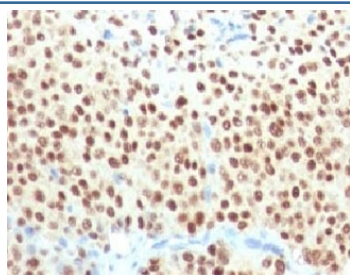


Protein array validation of the SOX10 antibody: Analysis of HuProt(TM) microarray containing more than 19,000 full-length human proteins using SOX10 antibody (clone SBX10-1). These results demonstrate the foremost specificity of the SBX10-1 mAb.

Z- and S- score: The Z-score represents the strength of a signal that an antibody (in combination with a fluorescently-tagged anti-IgG secondary Ab) produces when binding to a particular protein on the HuProt(TM) array. Z-scores are described in units of standard deviations (SD's) above the mean value of all signals generated on that array. If the targets on the HuProt(TM) are arranged in descending order of the Z-score, the S-score is the difference (also in units of SD's) between the Z-scores. The S-score therefore represents the relative target specificity of an Ab to its intended target.



Western blot testing of 1) partial recombinant protein and 2) A375 cell lysate using SOX10 antibody. Predicted molecular weight ~50 kDa.



IHC testing of FFPE melanoma with SOX10 antibody (clone SBX10-1). Required HIER: boil sections in pH 9 10mM Tris with 1mM EDTA for 10-20 minutes, followed by cooling at RT for 20 minutes, prior to staining.

Description

SOX10 is a member of the SOX (SRY-related HMG-box) family of transcription factors involved in the regulation of embryonic development and in the determination of the cell fate. It may act as a transcriptional activator after forming a protein complex with other proteins. This protein acts as a nucleocytoplasmic shuttle protein and is important for neural crest and peripheral nervous system development. [RefSeq]

Application Notes

Titering of the SOX10 antibody may be required for optimal performance.

1. The prediluted format is supplied in a dropper bottle and is optimized for use in IHC. After epitope retrieval step (if required), drip mAb solution onto the tissue section and incubate at RT for 30 min.

Immunogen

Amino acids 115-269 of the human protein were used as the immunogen for the SOX10 antibody.

Storage

Store the SOX10 antibody at 2-8oC (with azide) or aliquot and store at -20oC or colder (without azide).

