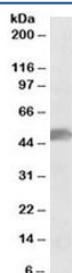


## SOX10 Antibody (R33380)

Catalog No.	Formulation	Size
R33380-100UG	0.5 mg/ml in 1X TBS, pH7.3, with 0.5% BSA (US sourced) and 0.02% sodium azide	100 ug

[Bulk quote request](#)

Availability	1-3 business days
Species Reactivity	Human
Predicted Reactivity	Cow, Dog, Mouse, Pig, Rat
Format	Antigen affinity purified
Clonality	Polyclonal (goat origin)
Isotype	Goat Ig
Purity	Antigen affinity
Gene ID	6663
Applications	Western Blot : 0.1-0.3ug/ml ELISA (peptide) LOD : 1:128000
Limitations	This SOX10 antibody is available for research use only.



Western blot testing of human cerebellum lysate with SOX10 antibody at 0.1ug/ml.  
Predicted molecular weight ~50kDa.

## Description

Additional name(s) for this target protein: SRY (sex determining region Y)-box 10

## Application Notes

Optimal dilution of the SOX10 antibody should be determined by the researcher.

## Immunogen

Amino acids DAKAQVKTETAGPQ were used as the immunogen for this SOX10 antibody.

## **Storage**

Aliquot and store the SOX10 antibody at -20oC.