

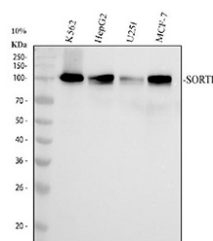
SORT1 Antibody / Sortilin [clone 17S35] (RQ8887)

Catalog No.	Formulation	Size
RQ8887	Antibody in PBS with 0.02% sodium azide, 50% glycerol and 0.4-0.5mg/ml BSA	100 ul

Recombinant RABBIT MONOCLONAL

[Bulk quote request](#)

Availability	1-3 days
Species Reactivity	Human
Format	Purified
Clonality	Recombinant Rabbit Monoclonal
Isotype	Rabbit IgG
Clone Name	17S35
Purity	Affinity chromatography
UniProt	Q99523
Applications	Western Blot : 1:500-1:2000
Limitations	This SORT1 antibody is available for research use only.



Western blot testing of human 1) K562, 2) HepG2, 3) U-251 and 4) MCF7 cell lysate with SORT1 antibody. Predicted molecular weight ~92 kDa.

Description

Sortilin (SORT1) is a type I transmembrane receptor belonging to the vacuolar protein sorting 10 (VPS10) domain receptor family. It is involved in intracellular protein trafficking, endocytosis, and sorting of a variety of ligands, including neurotrophins, lipoproteins, and enzymes. SORT1 plays an important role in neuronal viability, lipid metabolism, and protein transport between the Golgi apparatus and endosomes.

Altered expression or function of SORT1 has been associated with neurodegenerative disorders, cardiovascular disease, and lipid metabolism abnormalities. Research has linked SORT1 to regulation of low-density lipoprotein (LDL) cholesterol

levels and to processes that influence neuronal growth and survival. Understanding SORT1's biological roles can provide insights into both neurological function and metabolic health.

Using a high-quality SORT1 antibody enables reliable detection in applications such as western blot, immunohistochemistry, and immunofluorescence. A SORT1 antibody from NSJ Bioreagents ensures reproducibility and sensitivity for studies involving neuronal biology, lipid metabolism, and receptor-mediated signaling. Selecting the right SORT1 antibody is essential for generating accurate and consistent experimental results.

Application Notes

Optimal dilution of the SORT1 antibody should be determined by the researcher.

Immunogen

A peptide sequence specific to Sortilin was used as the immunogen for the SORT1 antibody.

Storage

After reconstitution, the SORT1 antibody can be stored for up to one month at 4°C. For long-term, aliquot and store at -20°C. Avoid repeated freezing and thawing.