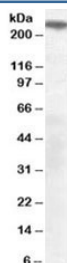


SORLA Antibody / Sortilin-related receptor 1 (R36176)

Catalog No.	Formulation	Size
R36176-100UG	0.5 mg/ml in 1X TBS, pH7.3, with 0.5% BSA (US sourced) and 0.02% sodium azide	100 ug

[Bulk quote request](#)

Availability	1-3 business days
Species Reactivity	Mouse
Predicted Reactivity	Human, Rat, Dog, Cow
Format	Antigen affinity purified
Host	Goat
Clonality	Polyclonal (goat origin)
Isotype	Goat Ig
Purity	Antigen affinity
Gene ID	6653
Applications	Western Blot : 0.3-1ug/ml ELISA (peptide) LOD : 1:32000
Limitations	This SORLA antibody is available for research use only.



Western blot testing of mouse brain lysate with SORLA antibody at 0.3ug/ml.
Predicted/observed molecular weight: ~250kDa.

Description

Additional name(s) for this target protein: SORL1; sortilin-related receptor, L(DLR class) A repeats-containing; SORL1

Application Notes

Optimal dilution of the SORLA antibody should be determined by the researcher.

Immunogen

Amino acids TGFSDDVPMVIA were used as the immunogen for this SORLA antibody.

Storage

Aliquot and store the SORLA antibody at -20oC.