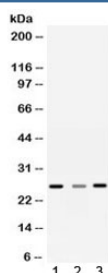


## Sorcin Antibody / SRI (R32428)

Catalog No.	Formulation	Size
R32428	0.5mg/ml if reconstituted with 0.2ml sterile DI water	100 ug

**Bulk quote request**

<b>Availability</b>	1-3 business days
<b>Species Reactivity</b>	Human, Rat
<b>Format</b>	Antigen affinity purified
<b>Clonality</b>	Polyclonal (rabbit origin)
<b>Isotype</b>	Rabbit IgG
<b>Purity</b>	Antigen affinity
<b>Buffer</b>	Lyophilized from 1X PBS with 2.5% BSA and 0.025% sodium azide
<b>UniProt</b>	P30626
<b>Applications</b>	Western Blot : 0.1-0.5ug/ml
<b>Limitations</b>	This Sorcin antibody is available for research use only.



Western blot testing of 1) rat liver, 2) rat brain and 3) human SMMC-7721 lysate with Sorcin antibody. Predicted molecular weight ~22 kDa, routinely observed at 22-29 kDa.

## Description

Sorcin is a protein that in humans is encoded by the SRI gene. It is mapped to 7q21.1. This gene encodes a calcium-binding protein with multiple E-F hand domains that relocates from the cytoplasm to the sarcoplasmic reticulum in response to elevated calcium levels. In addition to regulating intracellular calcium homeostasis it also modulates excitation-contraction coupling in the heart. Alternative splicing results in multiple transcript variants encoding distinct proteins. Multiple pseudogenes exist for this gene.

## Application Notes

Optimal dilution of the Sorcin antibody should be determined by the researcher.

## Immunogen

Amino acids TMGFNEFKELWAVLNGWRQHFISFDTDR from the human protein were used as the immunogen for the Sorcin antibody.

## Storage

After reconstitution, the Sorcin antibody can be stored for up to one month at 4oC. For long-term, aliquot and store at -20oC. Avoid repeated freezing and thawing.

## References (1)