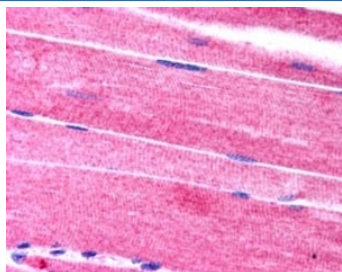


SORBS1 Antibody (R34142)

Catalog No.	Formulation	Size
R34142-100UG	0.5 mg/ml in 1X TBS, pH7.3, with 0.5% BSA (US sourced) and 0.02% sodium azide	100 ug

[Bulk quote request](#)

Availability	1-3 business days
Species Reactivity	Human
Predicted Reactivity	Mouse, Pig, Rat
Format	Antigen affinity purified
Host	Goat
Clonality	Polyclonal (goat origin)
Isotype	Goat Ig
Purity	Antigen affinity
Gene ID	10580
Applications	Immunohistochemistry (FFPE) : 2.5-5ug/ml ELISA (peptide) LOD : 1:16000
Limitations	This SORBS1 antibody is available for research use only.



IHC testing of FFPE human skeletal muscle with SORBS1 antibody at 2.5ug/ml. HIER: steamed with pH6 citrate buffer, AP-staining.

Description

Additional name(s) for this target protein: Ponsin, Sorbin and SH3 domain containing 1

Application Notes

Optimal dilution of the SORBS1 antibody should be determined by the researcher.

Immunogen

Amino acids GTFPGNYVKPLYL were used as the immunogen for this SORBS1 antibody.

Storage

Aliquot and store the SORBS1 antibody at -20oC.