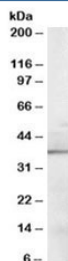


Sorbitol Dehydrogenase Antibody (R34474)

Catalog No.	Formulation	Size
R34474-100UG	0.5 mg/ml in 1X TBS, pH7.3, with 0.5% BSA (US sourced) and 0.02% sodium azide	100 ug

[Bulk quote request](#)

Availability	1-3 business days
Species Reactivity	Human, Mouse
Predicted Reactivity	Dog, Rat
Format	Antigen affinity purified
Host	Goat
Clonality	Polyclonal (goat origin)
Isotype	Goat Ig
Purity	Antigen affinity
Gene ID	6652
Applications	Western Blot : 0.1-0.3ug/ml ELISA (peptide) LOD : 1:16000
Limitations	This Sorbitol Dehydrogenase antibody is available for research use only.



Western blot testing of mouse kidney lysate with Sorbitol Dehydrogenase antibody at 0.1ug/ml. Predicted/observed molecular weight: ~38kDa.

Description

Additional name(s) for this target protein: SORD1; SORD

Application Notes

Optimal dilution of the Sorbitol Dehydrogenase antibody should be determined by the researcher.

Immunogen

Amino acids KIMLKCDPSDQNP were used as the immunogen for this Sorbitol Dehydrogenase antibody.

Storage

Aliquot and store the Sorbitol Dehydrogenase antibody at -20oC.