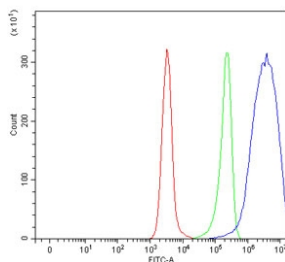


Solo Antibody / SESTD1 (RQ7036)

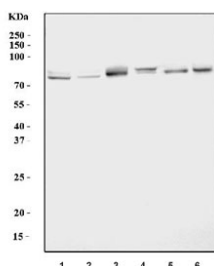
Catalog No.	Formulation	Size
RQ7036	0.5mg/ml if reconstituted with 0.2ml sterile DI water	100 ug

Bulk quote request

Availability	1-3 business days
Species Reactivity	Human, Mouse, Rat
Format	Antigen affinity purified
Clonality	Polyclonal (rabbit origin)
Isotype	Rabbit IgG
Purity	Antigen affinity purified
Buffer	Lyophilized from 1X PBS with 2% Trehalose
UniProt	Q86VW0
Applications	Western Blot : 0.5-1 ug/ml Flow Cytometry : 1-3ug/million cells Direct ELISA : 0.1-0.5ug/ml
Limitations	This Solo antibody is available for research use only.



Flow cytometry testing of human Daudi cells with Solo antibody at 1ug/million cells (blocked with goat sera); Red=cells alone, Green=isotype control, Blue= Solo antibody.



Western blot testing of 1) human HepG2, 2) human MCF7, 3) rat brain, 4) rat testis, 5) mouse brain and 6) mouse testis lysate with Solo antibody. Predicted molecular weight ~79 kDa.

Description

SEC14 and spectrin domains 1, also known as SEC14 domain, Spectrin repeat-containing protein 1, and Solo, is a protein that in humans is encoded by the SESTD1 gene. Enables phosphatidylinositol-3,4-bisphosphate binding activity and phospholipid binding activity. Involved in negative regulation of calcium ion transmembrane transport via high voltage-gated calcium channel. Located in intermediate filament cytoskeleton. Colocalizes with calcium channel complex.

Application Notes

Optimal dilution of the Solo antibody should be determined by the researcher.

Immunogen

Recombinant human protein (amino acids Q549-E690) was used as the immunogen for the Solo antibody.

Storage

After reconstitution, the Solo antibody can be stored for up to one month at 4°C. For long-term, aliquot and store at -20°C. Avoid repeated freezing and thawing.