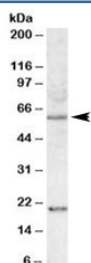


SODD Antibody (R34112)

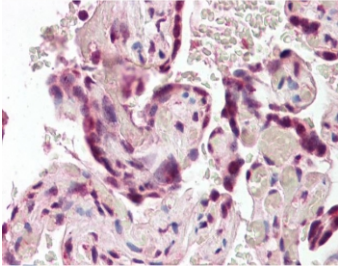
Catalog No.	Formulation	Size
R34112-100UG	0.5 mg/ml in 1X TBS, pH7.3, with 0.5% BSA (US sourced) and 0.02% sodium azide	100 ug

[Bulk quote request](#)

Availability	1-3 business days
Species Reactivity	Human
Format	Antigen affinity purified
Host	Goat
Clonality	Polyclonal (goat origin)
Isotype	Goat Ig
Purity	Antigen affinity
Gene ID	9530
Localization	Cytoplasmic
Applications	Western Blot : 1-3ug/ml IHC (FFPE) : 3.75ug/ml ELISA (peptide) LOD : 1:8000
Limitations	This SODD antibody is available for research use only.



Western blot testing of HEK293 lysate with SODD antibody at 1ug/ml. Predicted molecular weight: ~50 kDa, observed here at ~60 kDa. Both observed bands block with the addition of immunizing peptide.



IHC testing of FFPE human placenta tissue with SODD antibody at 3.75ug/ml. Required HIER: steamed antigen retrieval with pH6 citrate buffer; AP-staining.

Description

Additional name(s) for this target protein: BCL2-associated athanogene 4; BAG4

Application Notes

Optimal dilution of the SODD antibody should be determined by the researcher.

Immunogen

Amino acids GNATSDHPNNQDQSS were used as the immunogen for this SODD antibody.

Storage

Aliquot and store the SODD antibody at -20oC.