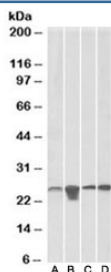


SOD2 Antibody (R33703)

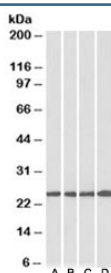
Catalog No.	Formulation	Size
R33703-100UG	0.5 mg/ml in 1X TBS, pH7.3, with 0.5% BSA (US sourced) and 0.02% sodium azide	100 ug

[Bulk quote request](#)

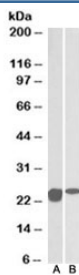
Availability	1-3 business days
Species Reactivity	Human, Mouse, Rat, Pig
Predicted Reactivity	Cow, Dog, Zebrafish
Format	Antigen affinity purified
Host	Goat
Clonality	Polyclonal (goat origin)
Isotype	Goat Ig
Purity	Antigen affinity
Gene ID	6648
Applications	Western Blot : 0.1-1ug/ml ELISA (peptide) LOD : 1:64000
Limitations	This SOD2 antibody is available for research use only.



Western blot testing of A) HeLa, B) HepG2, C) HEK293 and D) mouse NIH3T3 lysate with SOD2 antibody at 0.1ug/ml. Predicted molecular weight ~25kDa.



Western blot of human cerebellum (A), mouse brain (B), rat brain (C) and pig brain (D) lysates with SOD2 antibody at 0.3ug/ml. Predicted molecular weight ~25kDa.



Western blot of mouse (A) and rat (B) spinal cord lysates with SOD2 antibody at 0.01ug/ml. Predicted molecular weight ~25kDa.

Description

Additional name(s) for this target protein: Superoxide dismutase 2

Application Notes

Optimal dilution of the SOD2 antibody should be determined by the researcher.

Immunogen

Amino acids EAIKRDFGSFDK were used as the immunogen for this SOD2 antibody. The amino acid sequence used as immunogen is from the SOD2 acetylation site.

Storage

Aliquot and store the SOD2 antibody at -20oC.