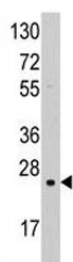


SOD2 Antibody (F50529)

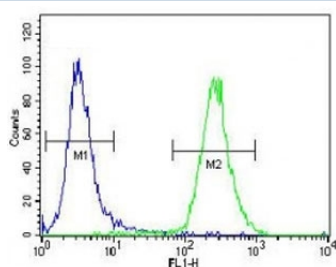
Catalog No.	Formulation	Size
F50529-0.4ML	In 1X PBS, pH 7.4, with 0.09% sodium azide	0.4 ml
F50529-0.08ML	In 1X PBS, pH 7.4, with 0.09% sodium azide	0.08 ml

Bulk quote request

Availability	1-3 business days
Species Reactivity	Human
Format	Purified
Host	Rabbit
Clonality	Polyclonal (rabbit origin)
Isotype	Rabbit Ig
Purity	Purified
UniProt	P04179
Applications	Western Blot : 1:1000 Flow Cytometry : 1:10-1:50
Limitations	This SOD2 antibody is available for research use only.



Western blot analysis of SOD2 antibody and K562 lysate. Predicted molecular weight ~ 25 kDa.



SOD2 antibody flow cytometric analysis of NCI-H460 cells (green) compared to a [negative control](#) (blue). FITC-conjugated goat-anti-rabbit secondary Ab was used for the analysis.

Description

SOD2 is a member of the iron/manganese superoxide dismutase family. It is a mitochondrial protein that forms a homotetramer and binds one manganese ion per subunit. This protein binds to the superoxide byproducts of oxidative phosphorylation and converts them to hydrogen peroxide and diatomic oxygen. Mutations in this gene have been associated with idiopathic cardiomyopathy (IDC), premature aging, sporadic motor neuron disease, and cancer.

Application Notes

Titration of the SOD2 antibody may be required due to differences in protocols and secondary/substrate sensitivity.

Immunogen

This SOD2 antibody was produced from rabbits immunized with human recombinant SD protein.

Storage

Aliquot the SOD2 antibody and store frozen at -20oC or colder. Avoid repeated freeze-thaw cycles.