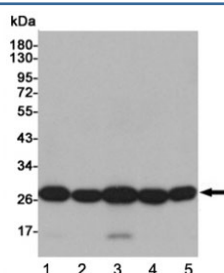


SOD2 Antibody [clone 4C4-G8-H12] (F54062)

Catalog No.	Formulation	Size
F54062-0.1ML	In PBS with 50% glycerol and 0.03% ProClin 300	0.1 ml

[Bulk quote request](#)

Availability	1-3 business days
Species Reactivity	Human
Format	Purified
Host	Mouse
Clonality	Monoclonal (mouse origin)
Isotype	Mouse IgG2b
Clone Name	4C4-G8-H12
Purity	Protein G affinity
UniProt	P04179
Applications	Western Blot : 1:1000
Limitations	This SOD2 antibody is available for research use only.



Western blot testing of human 1) HeLa, 2) THP-1, 3) A549, 4) Ramos and 5) K562 cell lysates using SOD2 antibody at 1:1000. Predicted molecular weight ~25 kDa.

Description

Superoxide dismutase 2 is a member of the iron/manganese superoxide dismutase family. The SOD2 gene encodes a mitochondrial protein that forms a homotetramer and binds one manganese ion per subunit. This protein binds to the superoxide byproducts of oxidative phosphorylation and converts them to hydrogen peroxide and diatomic oxygen. [Wiki]

Application Notes

The stated application concentrations are suggested starting points. Titration of the SOD2 antibody may be required due to differences in protocols and secondary/substrate sensitivity.

Immunogen

A synthetic SOD2-specific peptide was used as the immunogen for the SOD2 antibody.

Storage

Store the SOD2 antibody at -20oC.