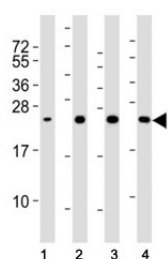


SOD2 Antibody [clone 37CT127.5.11.6] (F40411)

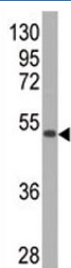
Catalog No.	Formulation	Size
F40411-0.4ML	In 1X PBS, pH 7.4, with 0.09% sodium azide	0.4 ml
F40411-0.08ML	In 1X PBS, pH 7.4, with 0.09% sodium azide	0.08 ml

[Bulk quote request](#)

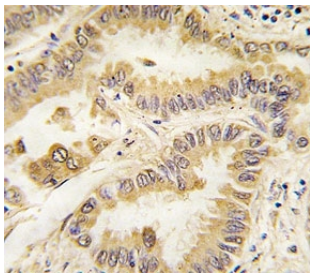
Availability	1-3 business days
Species Reactivity	Human
Format	Purified
Host	Mouse
Clonality	Monoclonal (mouse origin)
Isotype	Mouse IgG1, k
Clone Name	37CT127.5.11.6
Purity	Purified
UniProt	P04179
Applications	Western Blot : 1:2000 IHC (Paraffin) : 1:10-1:50
Limitations	This SOD2 antibody is available for research use only.



Western blot testing of SOD2 antibody at 1:2000 dilution and human samples. Lane 1: HeLa lysate; 2: brain; 3: heart; 4: liver lysate; Predicted molecular weight ~ 25 kDa.



Western blot analysis of SOD2 antibody and SOD2-GST fusion protein. Expected size ~50KD.



IHC analysis of FFPE human lung carcinoma tissue stained with SOD2 antibody

Description

This gene is a member of the iron/manganese superoxide dismutase family. It encodes a mitochondrial protein that forms a homotetramer and binds one manganese ion per subunit. This protein binds to the superoxide byproducts of oxidative phosphorylation and converts them to hydrogen peroxide and diatomic oxygen. Mutations in this gene have been associated with idiopathic cardiomyopathy (IDC), premature aging, sporadic motor neuron disease, and cancer. Alternate transcriptional splice variants, encoding different isoforms, have been characterized.

Application Notes

Titration of the SOD2 antibody may be required due to differences in protocols and secondary/substrate sensitivity.

Immunogen

Purified His-tagged protein fragment was used to produced this monoclonal SOD antibody.

Storage

Aliquot the SOD2 antibody and store frozen at -20oC or colder. Avoid repeated freeze-thaw cycles.