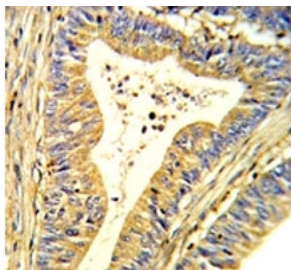


## SOD1 Antibody (F51318)

Catalog No.	Formulation	Size
F51318-0.4ML	In 1X PBS, pH 7.4, with 0.09% sodium azide	0.4 ml
F51318-0.08ML	In 1X PBS, pH 7.4, with 0.09% sodium azide	0.08 ml

[Bulk quote request](#)

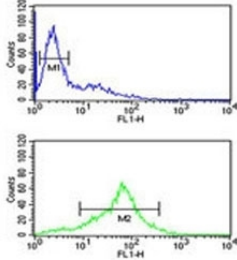
<b>Availability</b>	1-3 business days
<b>Species Reactivity</b>	Human
<b>Format</b>	Antigen affinity purified
<b>Host</b>	Rabbit
<b>Clonality</b>	Polyclonal (rabbit origin)
<b>Isotype</b>	Rabbit Ig
<b>Purity</b>	Antigen affinity
<b>UniProt</b>	P00441
<b>Applications</b>	Western Blot : 1:1000 IHC (Paraffin) : 1:50-1:100 Flow Cytometry : 1:10-1:50 Immunofluorescence : 1:10-1:50
<b>Limitations</b>	This SOD1 antibody is available for research use only.



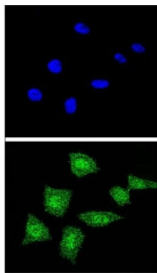
IHC analysis of FFPE human colon carcinoma stained with SOD1 antibody



Western blot analysis of SOD1 antibody and Jurkat lysate. Predicted molecular weight: ~16 kDa.



SOD1 antibody flow cytometric analysis of Jurkat cells (green) compared to a negative control (blue). FITC-conjugated goat-anti-rabbit secondary Ab was used for the analysis.



Confocal immunofluorescent analysis of SOD1 antibody with 293 cells followed by Alexa Fluor 488-conjugated goat anti-rabbit IgG (green). DAPI was used as a nuclear counterstain (blue).

## Description

SOD1 binds copper and zinc ions and is one of two isozymes responsible for destroying free superoxide radicals in the body. This isozyme is a soluble cytoplasmic protein, acting as a homodimer to convert naturally-occurring but harmful superoxide radicals to molecular oxygen and hydrogen peroxide. The other isozyme is a mitochondrial protein.

## Application Notes

Titration of the SOD1 antibody may be required due to differences in protocols and secondary/substrate sensitivity.

## Immunogen

A portion of amino acids 55-84 from the human protein was used as the immunogen for this SOD1 antibody.

## Storage

Aliquot the SOD1 antibody and store frozen at -20°C or colder. Avoid repeated freeze-thaw cycles.